

IMD103

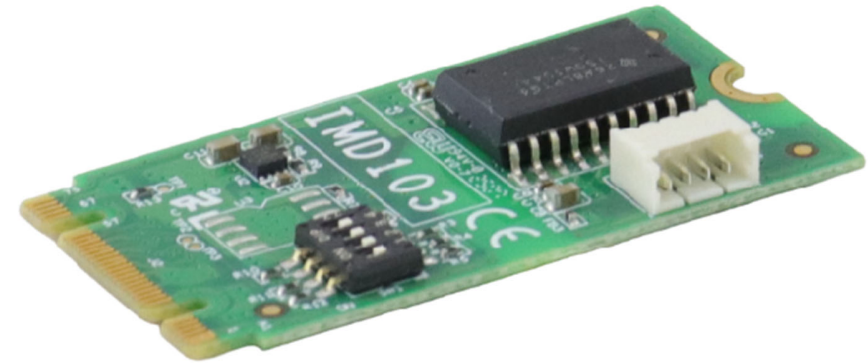
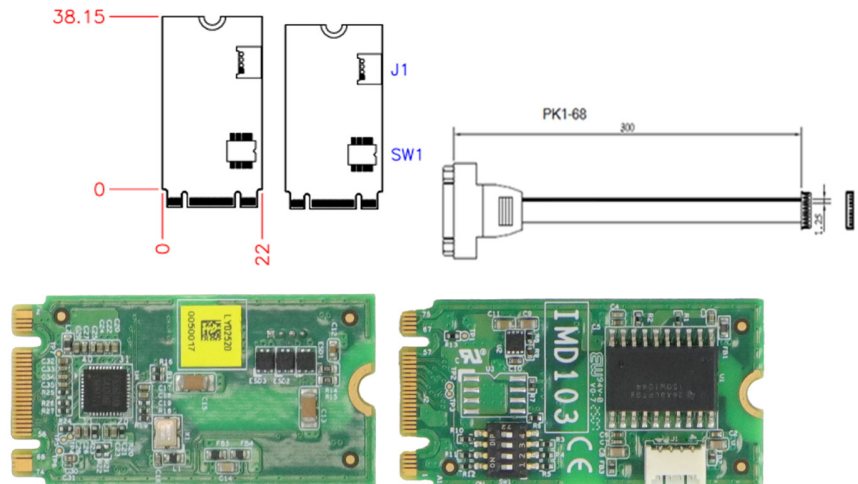
M.2 CAN Bus Module Card

User Guide
Rev. 1.0

Features:

Input Interface: PCIe x1 via M.2 B-M gold finger
Output Interface: 1 x DB9 via cable
Main Controller: Fintek F81601AN
Output I/O: 1 x 4-pin DIP 90° P1.25 connector
Communication: CAN 2.0A / 2.0B / CAN-FD
Form Factor: M.2 2242 B-M
Dimensions: 22 x 42 x 5mm
Cable: PK1-68
Power Consumption: Max. 2.5W (3.3V, 742mA)
Operating Temperature: 0°C to 70°C / -40°C to 85°C
Storage Temperature: -55°C to 95°C
Humidity: 10%~90% (non-condensing)
Shock: 50G @ 0.5ms
Vibration: 5G @ 7~2000Hz
Certification: IEC 60950-1:2005 + A1:2009 + A2:2013, 2.5kV HIPOT protection
Isolation: Single isolated CANbus 2.0B
Compatibility: CANbus 2.0B backward compatible with CAN 2.0A
Supported Baud Rate: 10 / 20 / 50 / 100 / 250 / 500 / 800 / 1000 kbps
Compliance: Meets ISO 11898-1 requirements

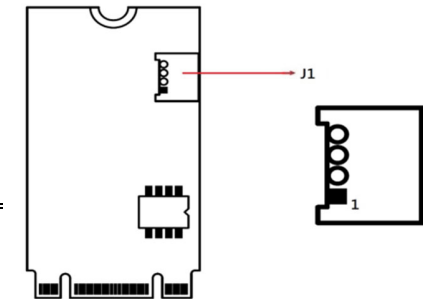
Dimensions and Drawings



Connector Pin Definition

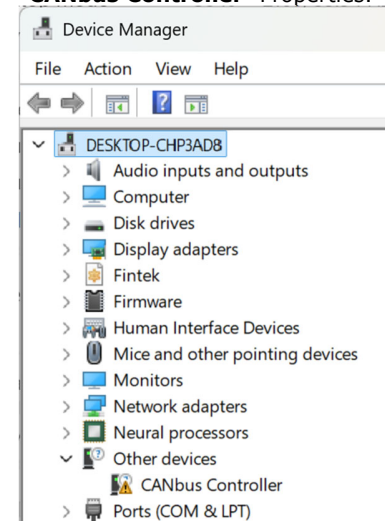
J1: CAN Bus Connector

Pin #	Signal Name
1	CAN_DH1
2	Ground
3	CAN_DL1
4	Ground



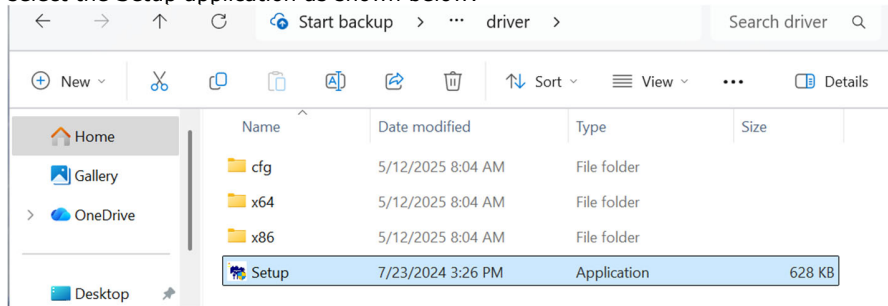
Driver Installation

1. In the Windows OS, go to the Device Manager. In the 'Other devices' as shown, right-click 'CANbus Controller' Properties.

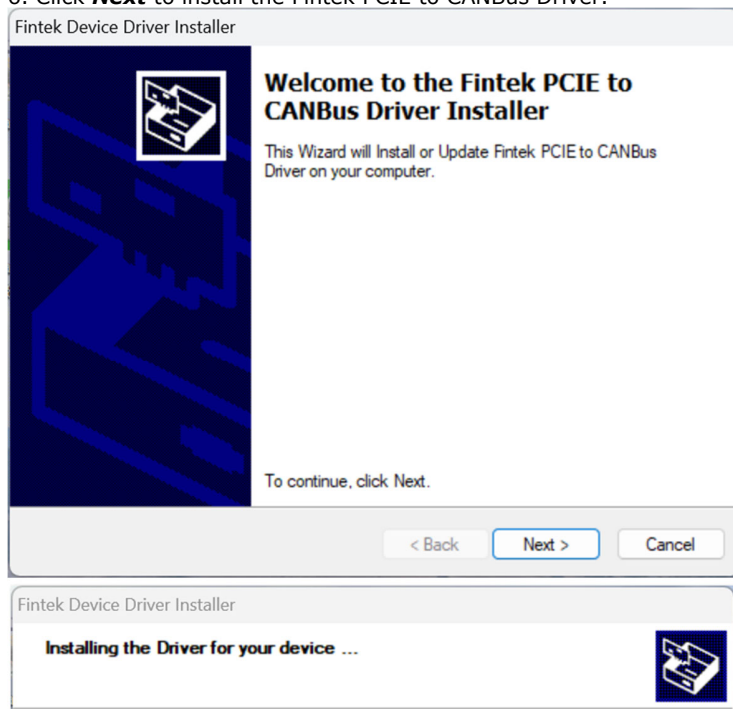


2. In the properties screen, click **Reinstall / Update Driver**.
 3. In the Hardware Update Wizard screen, select "No, not this time" and click **Next** to continue.
 4. Select "Install from a list or specific location (Advanced)" and click **Next** to continue.

5. Choose "search" and "installation" options, select the checkbox for "Include this location in the search", and browse to the driver folder and select the Setup application as shown below:

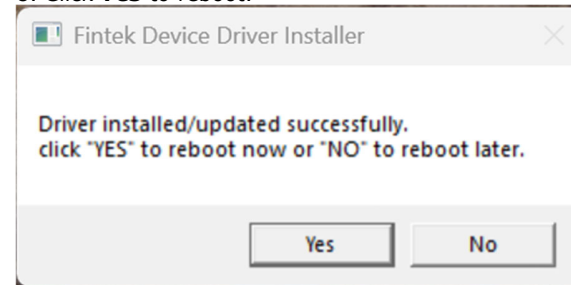


6. Click **Next** to install the Fintek PCIE to CANBus Driver.



7. Click **Finish**.

8. Click **Yes** to reboot.



9. The Device Manager will be updated to show the new devices.

