

IMD102 M.2 Serial Port Module Card

User Guide
Rev. 1.0

Features:

Input Interface: PCIe x1 via M.2 B-M key gold finger

Output Interface: 4 x DB9 via cables

Main Controller: Fintek F81054

Output I/O: 4 x 2.0mm pitch 2x5 pin headers

RS232 only

Dimensions: 22 x 80 x 9 mm

Cable: PK1-68

Operating Temperature: 0°C to 70°C

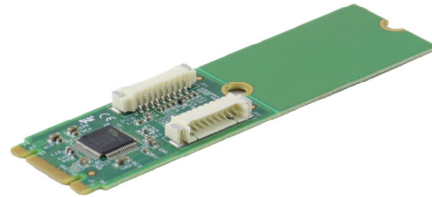
Storage Temperature: -55°C to 95°C

Humidity: 10%~90% (non-condensing)

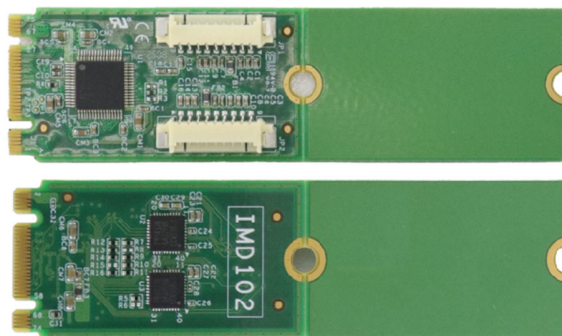
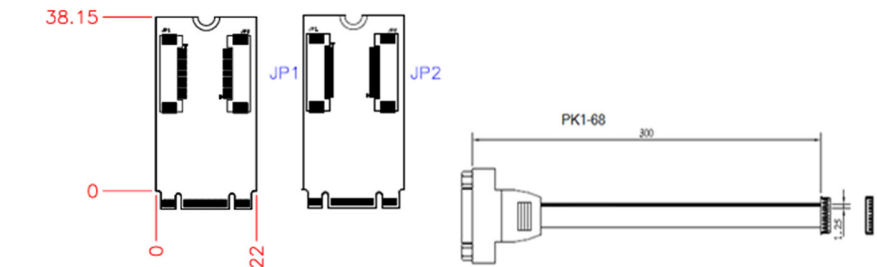
Shock: IBASE standard test

Vibration: IBASE standard test

Certification: Complies with CE, FCC Class B



Dimensions and Drawings



Connector Pin Definitions

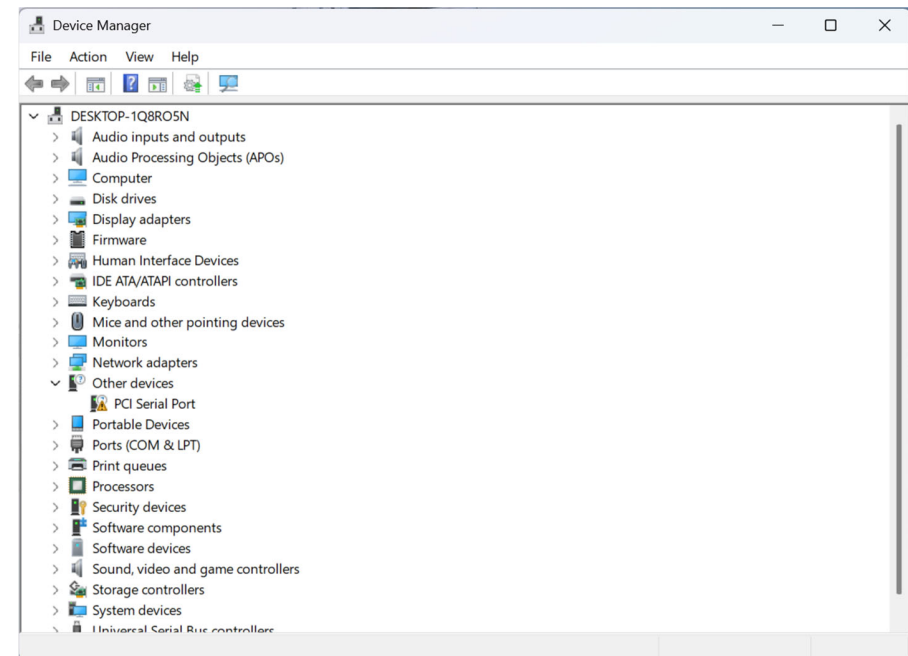
JP1 : COM1

JP2 : COM2

Pin #	Signal Name
1	DCD, Data carrier detect
2	RXD, Receive data
3	CTS, Clear to send
4	GND, Ground
5	TXD, Transmit data
6	RTS, Request to send
7	DSR, Data set ready
8	DTR, Data terminal ready
9	RI, Ring indicator

Driver Installation

1. In the Windows OS, go to the Device Manager. In the 'Other devices' as shown, right-click "PCI Serial Port" Properties.

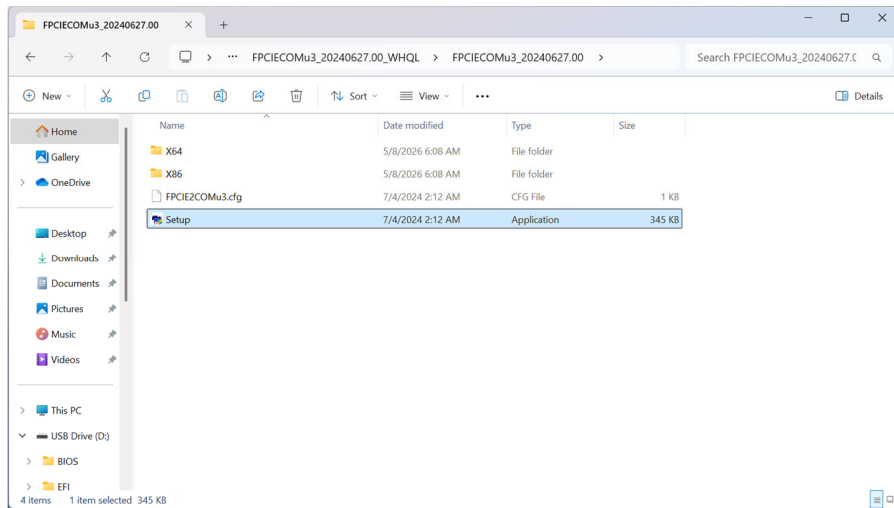


2. In the PCI Serial Port properties screen, click **Reinstall / Update Driver**.

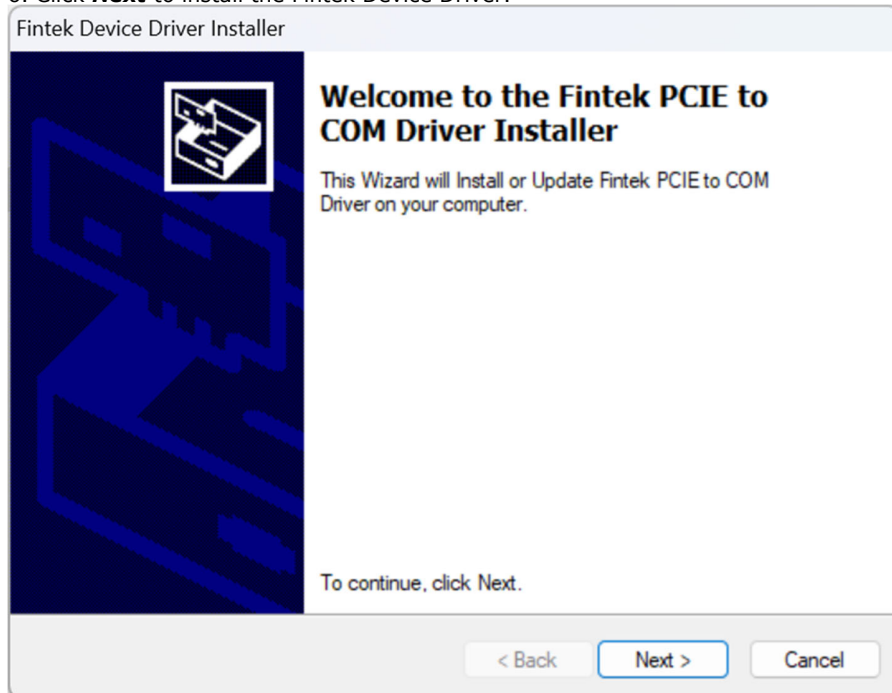
3. In the Hardware Update Wizard screen, select "No, not this time" and click **Next** to continue.

4. Select "Install from a list or specific location (Advanced)" and click Next to continue.

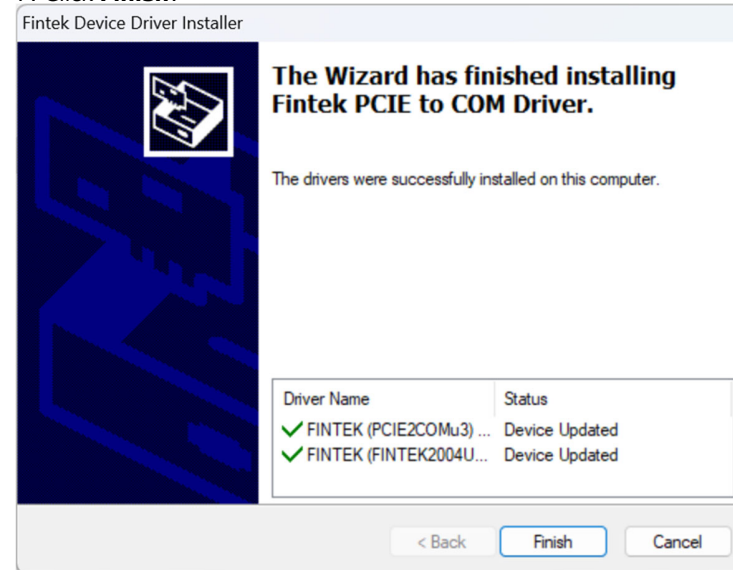
5. Choose the "search" and "installation" options, select the checkbox for "Include this location in the search", and browse to the driver folder and select the Setup application as shown below:



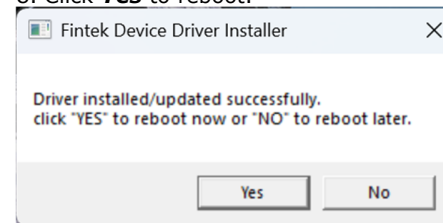
6. Click **Next** to install the Fintek Device Driver.



7. Click **Finish**.



8. Click **Yes** to reboot.



9. The Device Manager will be updated to show the new devices.

