

IDOOH-215-PC

Outdoor All-in-One Panel PC

User's Manual

Version 1.0



Copyright

© 2025 IBASE Technology, Inc. All rights reserved.

No part of this publication may be reproduced, copied, stored in a retrieval system, translated into any language or transmitted in any form or by any means, electronic, mechanical, photocopying, or otherwise, without the prior written consent of IBASE Technology, Inc. (hereinafter referred to as "IBASE").

Disclaimer

IBASE reserves the right to make changes and improvements to the products described in this document without prior notice. Every effort has been made to ensure the information in the document is correct; however, IBASE does not guarantee this document is error-free. IBASE assumes no liability for incidental or consequential damages arising from misapplication or inability to use the product or the information contained herein, nor for any infringements of rights of third parties, which may result from its use.

Trademarks

All the trademarks, registrations and brands mentioned herein are used for identification purposes only and may be trademarks and/or registered trademarks of their respective owners.

Compliance

CE

This product has passed CE tests for environmental specifications and limits. This product is in accordance with the directives of the European Union (EU). If users modify and/or install other devices in this equipment, the CE conformity declaration may no longer apply.

FCC

This product has been tested and found to comply with the limits for a Class B device, pursuant to Part 15 of the FCC Rules. These limits are designed to provide reasonable protection against harmful interference in a residential installation. This equipment generates, uses and can radiate radio frequency energy and, if not installed and used in accordance with manufacturer's instructions, may cause harmful interference to radio communications.

WEEE



This product must not be disposed of as normal household waste, in accordance with the EU directive for waste electrical and electronic equipment (WEEE - 2012/19/EU). Instead, it should be disposed of by returning it to a municipal recycling collection point. Check local regulations for disposal of electronic products.

Green IBASE



This product complies with RoHS 2 restrictions, which prohibit the use of certain hazardous substances in electrical and electronic equipment. The following substances must not exceed the specified concentrations:

- Hexavalent chromium: 1,000 ppm
- Poly-brominated biphenyls (PBBs): 1,000 ppm
- Poly-brominated diphenyl ethers (PBDEs): 1,000 ppm
- Cadmium: 100 ppm
- Mercury: 1,000 ppm
- Lead: 1,000 ppm
- Bis(2-ethylhexyl) phthalate (DEHP): 1,000 ppm
- Butyl benzyl phthalate (BBP): 1,000 ppm
- Dibutyl phthalate (DBP): 1,000 ppm
- Diisobutyl phthalate (DIBP): 1,000 ppm

Important Safety Information

Carefully read the precautions before using the device.

Environmental conditions:

- Lay the device horizontally on a stable and solid surface in to prevent the device from falling.
- Make sure you leave plenty of space around the device for ventilation.

Care for your iBASE products:

- Before cleaning the device, turn it off and unplugging all cables (including power) to avoid residual electrical current.
- Use neutral cleaning agents or diluted alcohol to clean the device chassis with a cloth. Then wipe the chassis with a dry cloth.
- Vacuum the dust with a computer vacuum cleaner to prevent the air vent or slots from being clogged.



WARNING

Attention during use:

- Do not use this product near water.
- Do not spill water or any other liquids on your device.
- Do not place heavy objects on top of the device.
- Operate this device from the type of power indicated on the marking label. If you are not sure of the type of power available, consult your distributor or local power company.
- Do not walk on the power cord or allow anything to rest on it.
- If you use an extension cord, make sure that the total ampere rating of the product plugged into the extension cord does not exceed its limits.

Avoid Disassembly

Do not disassemble, repair or make any modification to the device. Disassembly, modification, or any attempt at repair could generate hazards and cause damage to the device, even bodily injury or property damage, and will void any warranty.



CAUTION

Replace only with the same or equivalent type recommended by the manufacturer. Dispose of used batteries according to the manufacturer's instructions.

Warranty Policy

- **IBASE standard products:**

24-month (2-year) warranty from the date of shipment. If the date of shipment cannot be ascertained, the product serial number can be used to determine the approximate shipping date.

- **3rd-party parts:**

12-month (1-year) warranty from delivery for the 3rd-party parts that are not manufactured by IBASE, such as CPU, memory, HDD, power adapter, panel and touchscreen.

* PRODUCTS, HOWEVER, THAT FAIL DUE TO MISUSE, ACCIDENT, IMPROPER INSTALLATION OR UNAUTHORIZED REPAIR SHALL BE TREATED AS OUT OF WARRANTY AND CUSTOMERS SHALL BE BILLED FOR REPAIR AND SHIPPING CHARGES.

Technical Support & Services

1. Visit the IBASE website at www.ibase.com.tw to find the latest information about the product.
2. If you need any further assistance from your distributor or sales representative, prepare the following information of your product and elaborate upon the problem.
 - Product model name
 - Product serial number
 - Detailed description of the problem
 - Error messages in text or screenshots (if any).
 - The arrangement of the peripherals
 - Software in use (such as OS and application software, including the version numbers)
3. If repair service is required, please go to the IBASE website and apply for an RMA number to fill out the RMA application form.

Table of Contents

Chapter 1	General Information	1
1.1	Introduction	2
1.2	Features.....	2
1.3	Packing List	3
1.4	Optional Accessories	3
1.5	Specifications.....	3
1.6	Product View.....	5
1.7	Dimensions	6
Chapter 2	Hardware Configuration	8
2.1	Installations.....	9
2.1.1	I/O Pin definition DC-IN and LAN.....	9
2.1.2	VESA and Wall Mounting Installation.....	10
Chapter 3	Drivers Installation	12
Chapter 4	BIOS Setup	24
Chapter 5	Motherboard Information	41

Chapter 1

General Information

The information provided in this chapter includes:

- Features
- Packing List
- Specifications
- Product View
- Dimensions

1.1 Introduction

The IDOOH-215-PC is an outdoor panel PC that utilizes the quad-core 3.6GHz AMD® E1605B processor, providing high computing performance with low power consumption. It has a 21.5-inch screen.

The IDOOH-215-PC features a fully IP65-rated design, making it ideal for food processing, livestock management, chemical plants, mining, petroleum industries, factory automation, and other industrial or outdoor applications.



1.2 Features

- Fully IP65 certified
- Projected capacitive touch screen
- Durable aluminum housing
- Supports USB2.0 interface with M12 connector
- Supports HDMI interface with M12 connector

1.3 Packing List

Your product package should include the items listed below. If any of the items below is missing, contact the distributor or the dealer from whom you purchased the product.

- IDOOH-215-PC x 1
- M12 connector dust cover for HDMI and USB x 2
- M12 220CM Cable to DC-IN and LAN x 1

1.4 Optional Accessories

IBASE provides optional accessories as follows. Please contact us or your dealer if you need any.

- M12 USB 2.0 cable (P/N# C501USB1804A32000P)

1.5 Specifications

LCD Panel	
Model	21.5" panel
Resolution	1920x 1080
Color	16.7M
View Angle	178°/178° (H/V)
Brightness	Center 1300 nits, before touch screen
Backlight Lifetime	50,000 hours
CPU	
Model	AMD Ryzen V1000 1605B
Speed	4 Cores @ 2.0 to 3.6GHz
TDP	12~25W
Chipset	
Chipset	Integrated AMD Radeon Vega 8
Memory	
Configuration	2 x DDR4-2400 (1.2V) SO-DIMM
Max. Support	32GB, Default 8GB, 4GB x2

Edge I/O	
Graph	1 x HDMI with waterproof screw base and cap
LAN / PHY	1 x M12 17P connector, integrated with power input
USB	1 x USB 2.0 Type A waterproof screw base and cap
Power switch	1 x IP67 push button
Power input	1 x M12 17P connector, integrated with LAN port
System Fan	
CPU fan	None
System fan	2 x system fan with smart BIOS control enxlodat
Storage	
Storage Drive	1 x 2.5" SATA3 space, default 64GB 3D TLC SSD
Dimension	
Dimensions (w/ Lid)	543x349.2x105 mm
Dimensions (w/o Lid)	535x329x98.5 mm
Weight (w/ Lid)	8.1kg
Power	
Power	DC 19V
Touch Screen	
Touch Controller	21.5" Projected capacitive touch, 10-point projected capacitive touch, 70% light transmission, USB interface, EETI 80H80 controller
Construction	
Front Bezel	Aluminum, black color.
Chassis	Aluminum, black color.
Others	Front-side protection lid
Mounting	VESA 100x100mm
Protection Class	IP65
OS and Firmware	
OS support	Windows 10 IOT core/ Linux 4.X+ kernel
BIOS	AMI BIOS
Environmental	
Temperature	Operating: -5°C ~ 50°C Storage: -20°C ~ 80°C
Humidity	10% ~ 90% @40°C (non-condensing)
Certification	CE/FCC Class B
Accessories	
Screws	Kangyang THRI3-6 screw x 4
M12 Cable	220CM for DC-IN and RJ-45

All specifications are subject to change without prior notice.

1.6 Product View

1.6.1 Oblique & Rear View



1.6.2 I/O View

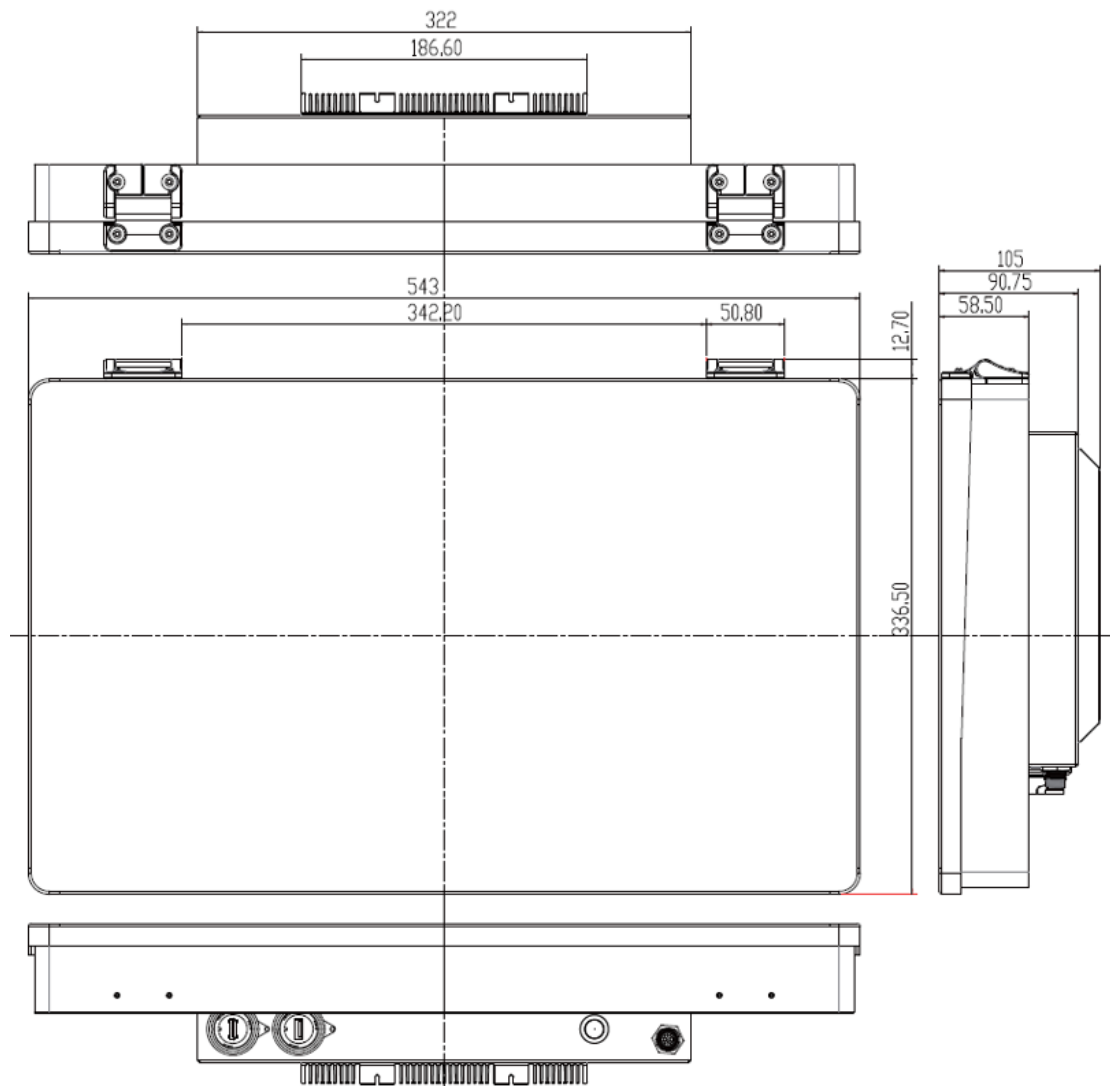


No.	Name
1	DC-In and LAN
2	Power Button
3	USB 2.0 (M12)
4	HDMI (M12)

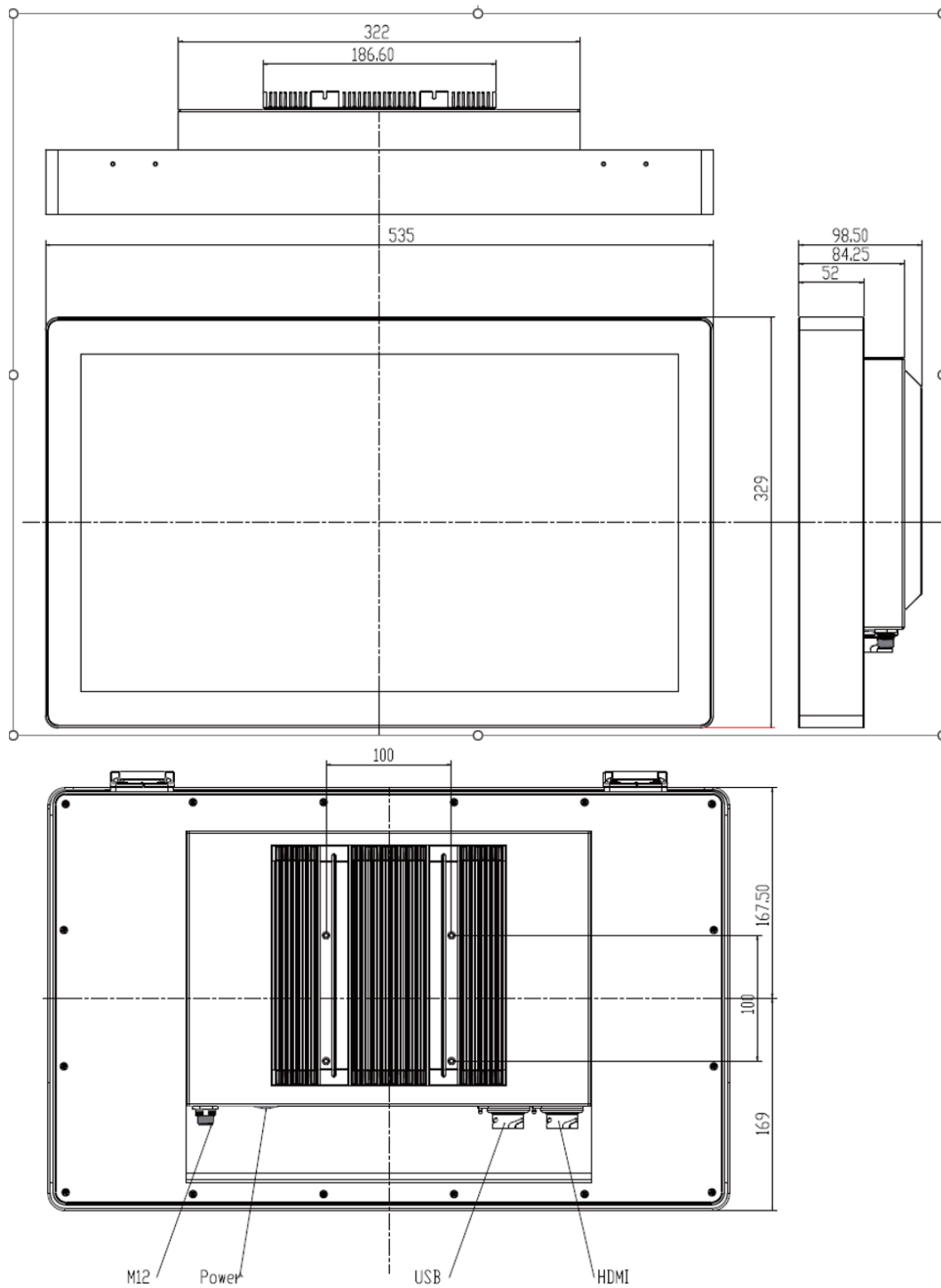
1.7 Dimensions

Unit: mm

IDOOH-215-PC with Panel Cover



IDOOH-215-PC without Panel Cover



Chapter 2

Hardware Configuration

The information provided in this chapter includes:

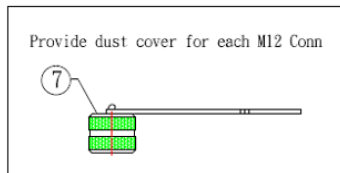
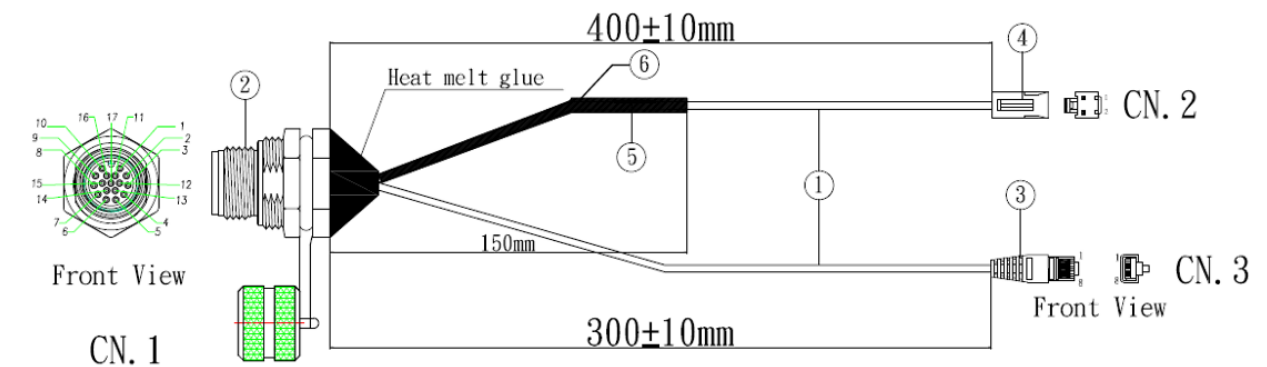
- Installations
- Information of jumpers and connectors

2.1 Installations

This section is all illustrated by the example of IDOOH-215-PC

Avoid device disassembly: Because IDOOH-215-PC systems are fully IP65-rated. You are not suggested to disassemble, repair or make any modification to the device. Disassembly, modification, or any attempt at repair could generate hazards and cause damage to the device. If you need to make any change to the device, please contact iBASE.

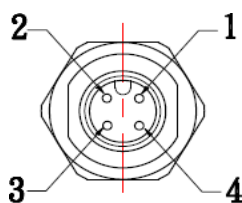
2.1.1 I/O Pin definition DC-IN and LAN



USB 2.0

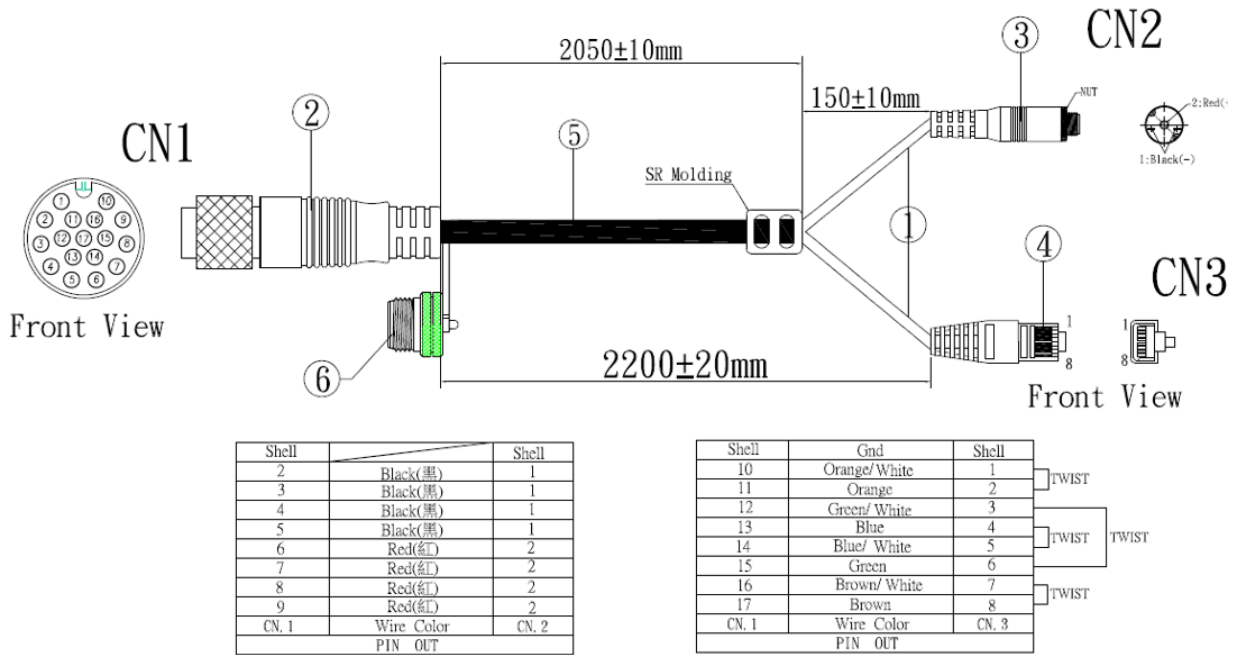
Shell		Shell
1	10kOhm resistance	1
2	Black(黑)	1
3	Black(黑)	1
4	Black(黑)	1
5	Black(黑)	1
6	Red(紅)	2
7	Red(紅)	2
8	Red(紅)	2
9	Red(紅)	2
CN. 1	Wire Color	CN. 2
	PIN	OUT

Shell	Gnd	Shell	
10	Orange/White	1	TWIST
11	Orange	2	
12	Green/ White	3	TWIST
13	Blue	4	
14	Blue/ White	5	TWIST
15	Green	6	
16	Brown/ White	7	TWIST
17	Brown	8	
CN. 1	Wire Color	CN. 3	
	PIN	OUT	



Pin	Definition
1	+5V
2	D-
3	D+
4	GND

External M12 cables Pin Definition

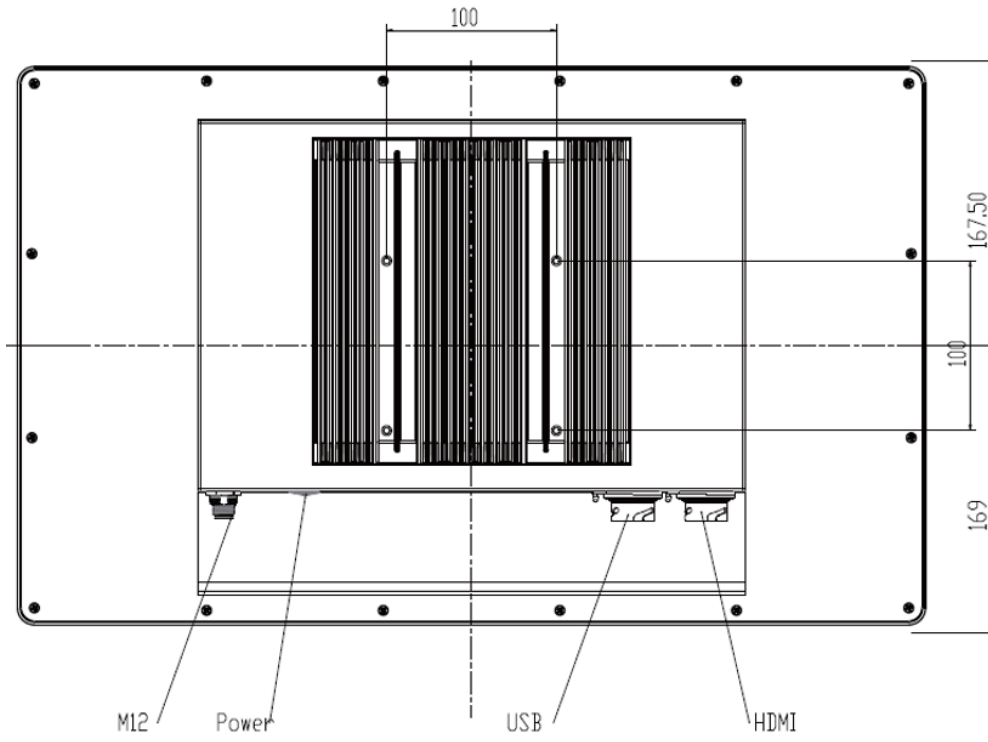


PS:RJ45 Jack Follow 568B standard

2.1.2 VESA and Wall Mounting Installation

1. VESA Mount

You will need to prepare the VESA mount bracket in advance. Tighten 4 screws (4-M4) as below to attach the device to the bracket.



Chapter 3

Drivers Installation

This chapter introduces installation of the following drivers:

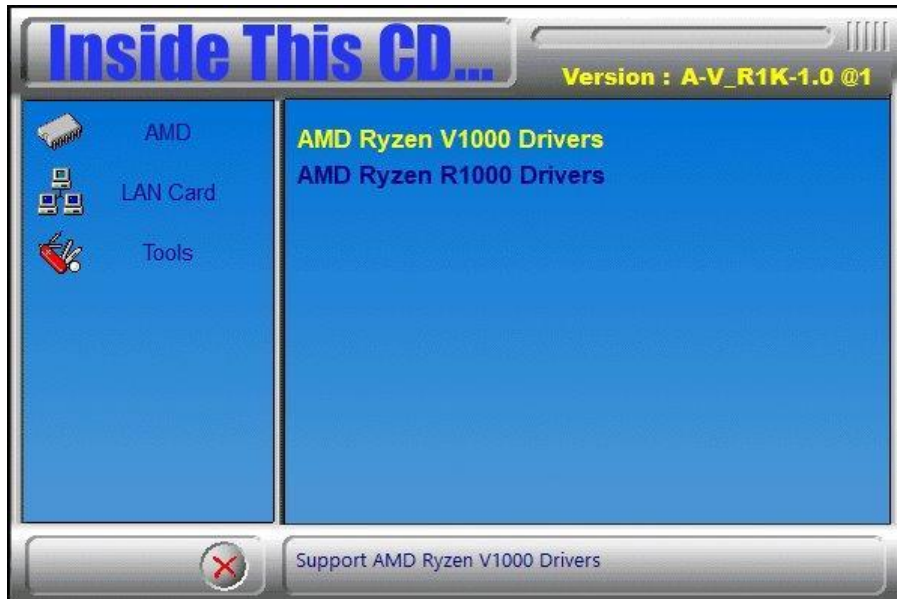
- AMD Ryzen™ V1000/R1000 Graphics Driver
- HD Audio Driver
- LAN Driver

3.1 Introduction

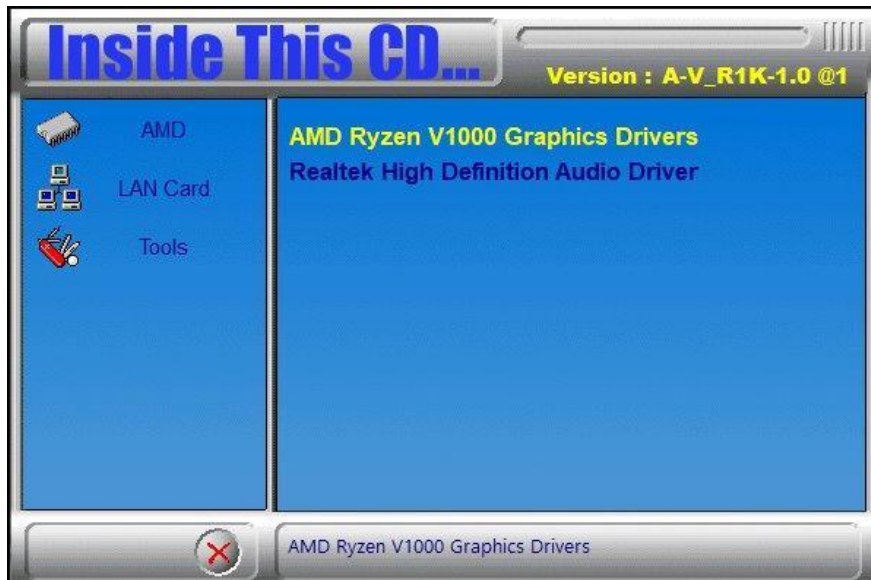
This section describes the installation procedures for software and drivers. The contents of this section include the following:

3.2 AMD Ryzen™ V1000 Graphics Drivers

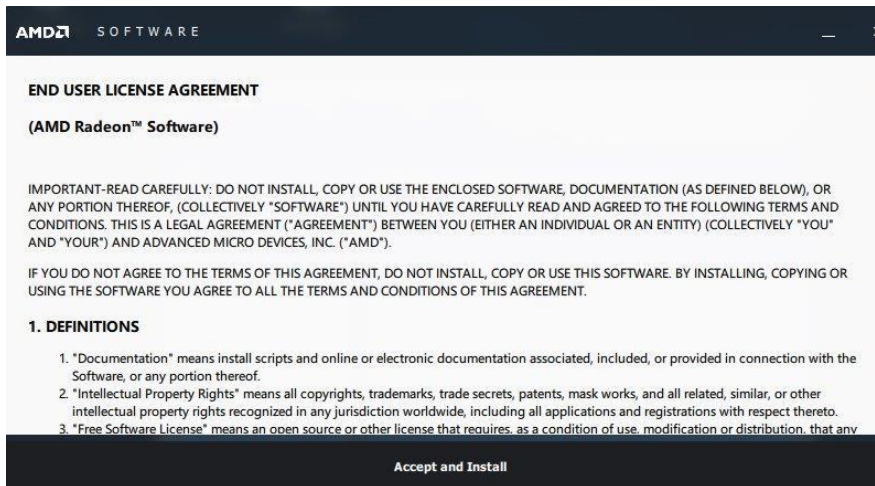
1. Click **AMD** on the left pane and then **AMD Ryzen V1000 Drivers** on the right pane.



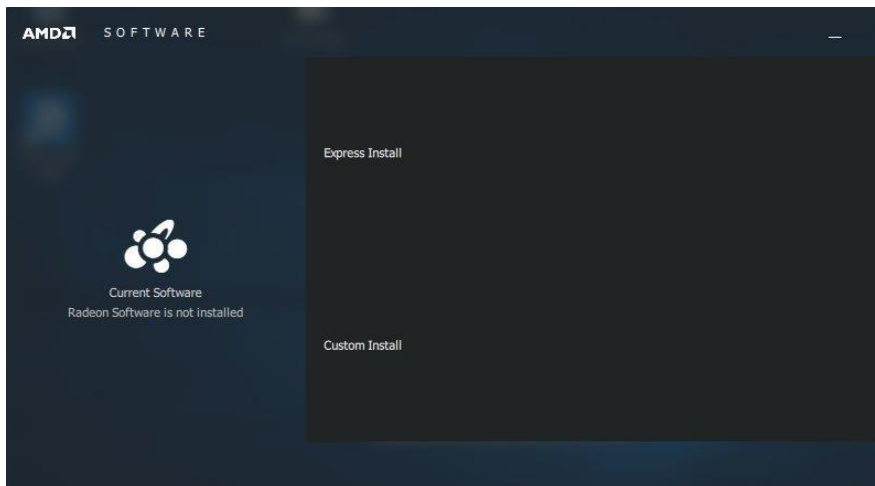
2. Click **AMD Ryzen V1000 Graphics Drivers**.



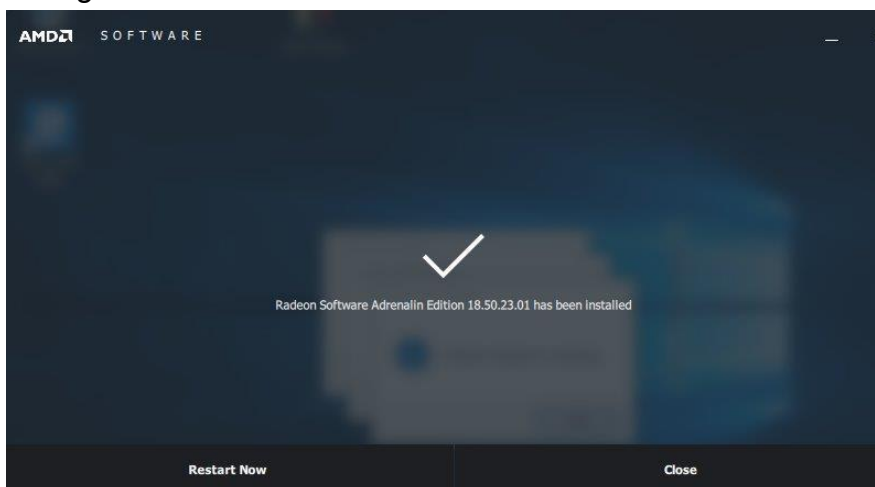
3. Now click **Accept and Install** to proceed.



4. Choose and click on either **Express Install** or **Custom Install**.

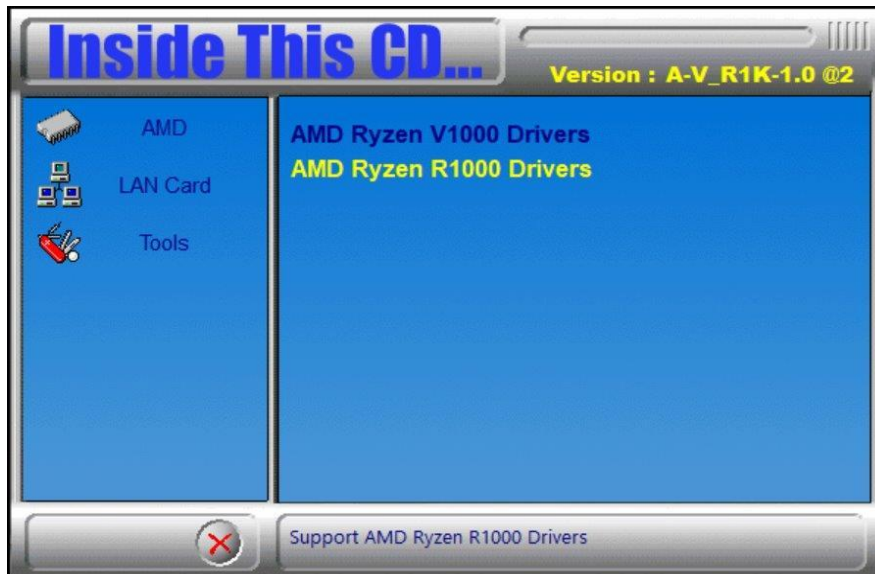


5. When the software driver has been installed, restart the computer for changes to take effect.

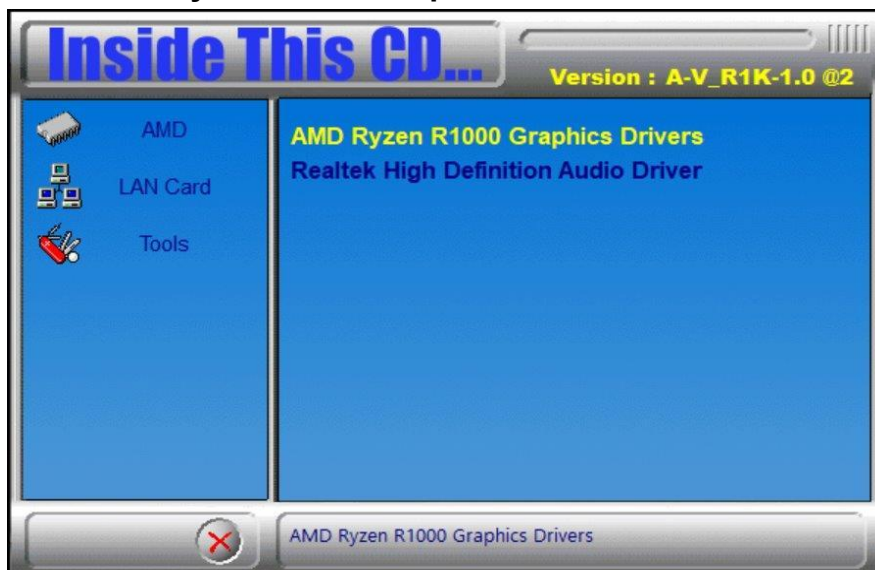


3.3 AMD Ryzen™ R1000 Graphics Drivers

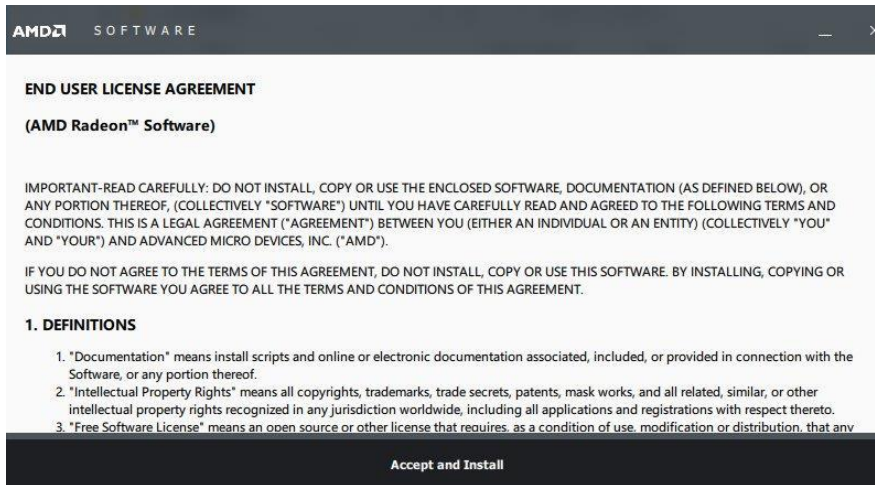
1. Click **AMD** on the left pane and then **AMD Ryzen R1000 Drivers** on the right pane.



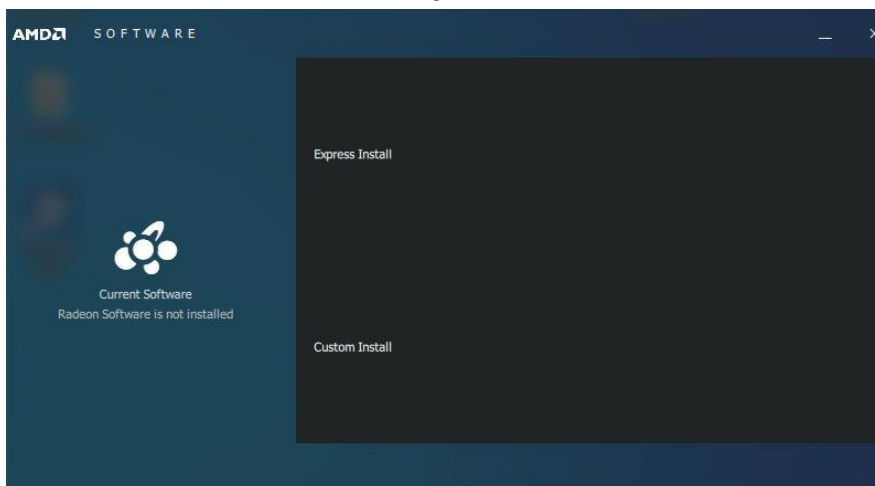
2. Click **AMD Ryzen R1000 Graphics Drivers**.



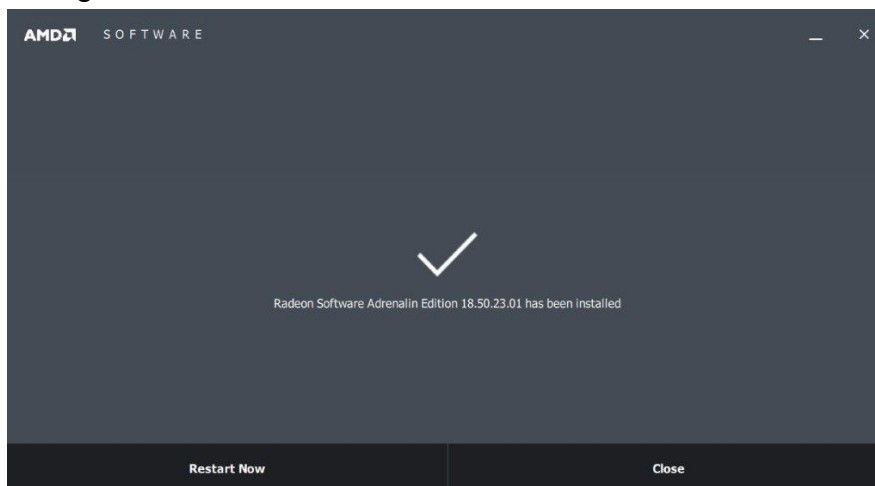
3. Read the software license agreement and click **Accept and Install** to proceed.



4. Choose and click on either **Express Install** or **Custom Install**.

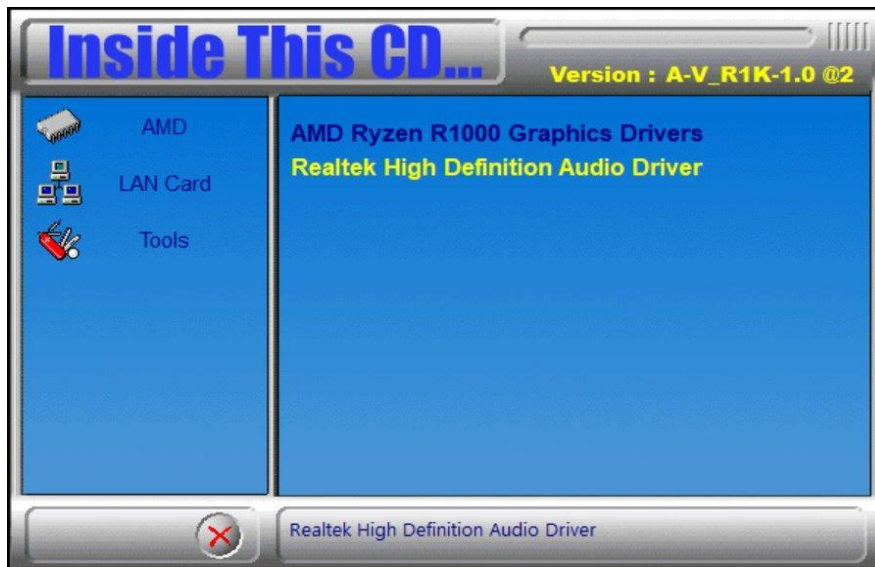


5. When the software driver has been installed, restart the computer for changes to take effect.

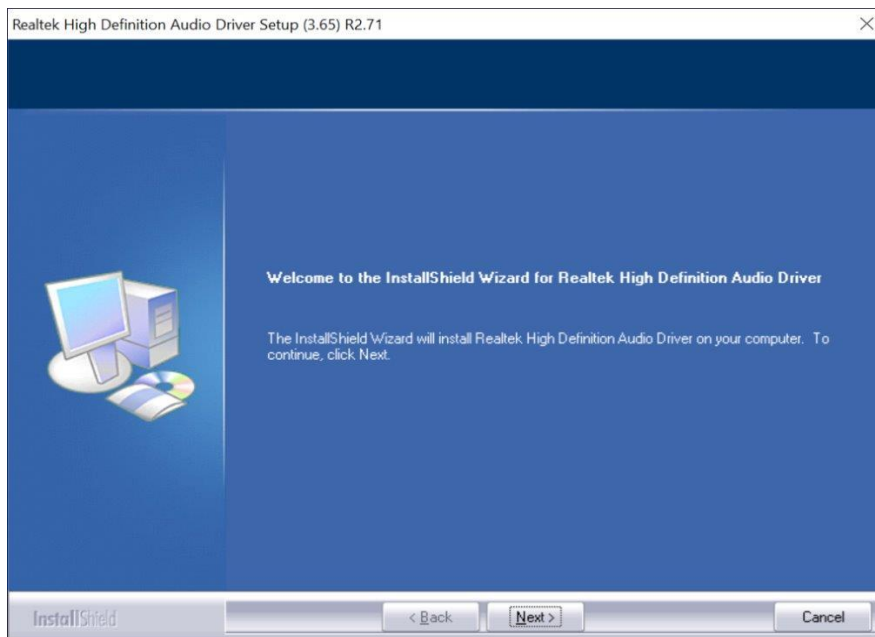


3.4 HD Audio Driver Installation

1. Click **AMD** on the left pane and then **Realtek High Definition Audio Driver** on the right pane.



2. On the *Welcome* screen of the InstallShield Wizard, click **Next**.



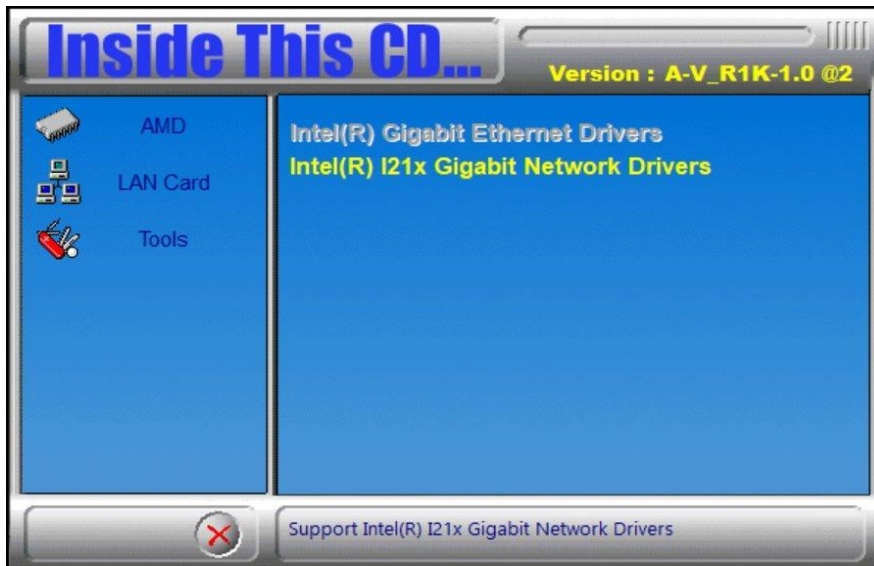
3. Follow the steps accordingly. When Setup has successfully installed the Audio Driver, restart your computer for changes to take effect.

3.5 LAN Driver Installation

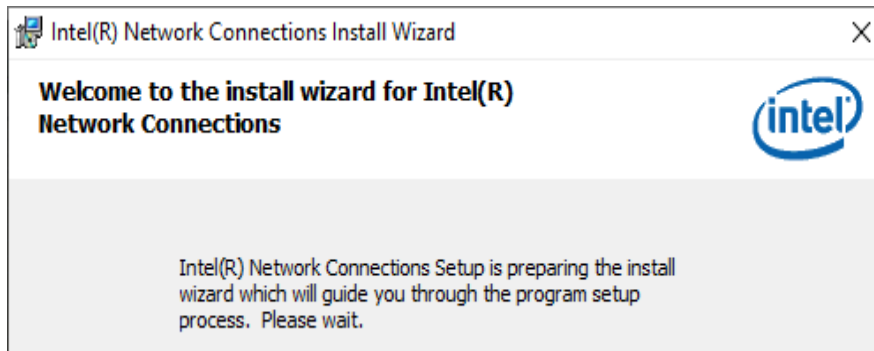
1. Click **LAN Card** on the left pane and **Intel LAN Controller Drivers** on the right pane.



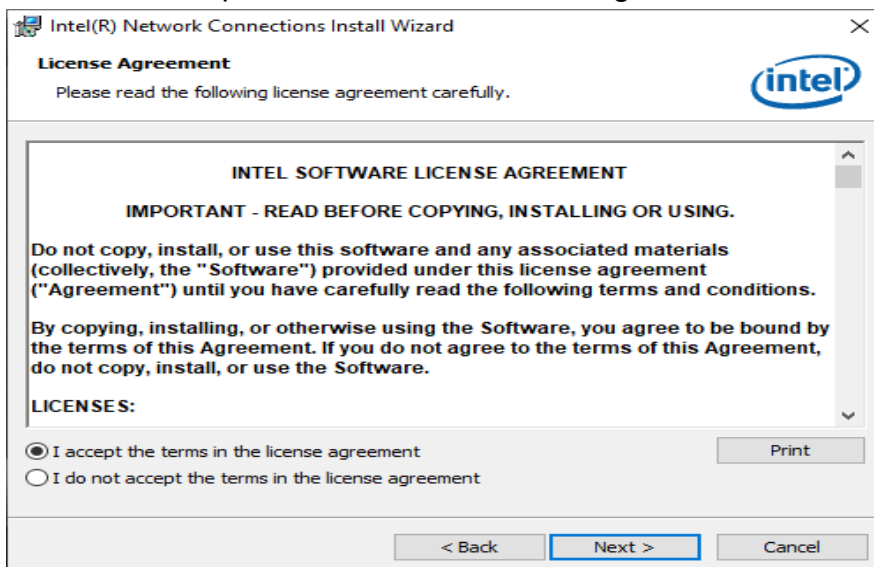
2. Click **Intel(R) I21x Gigabit Networks Drivers**.



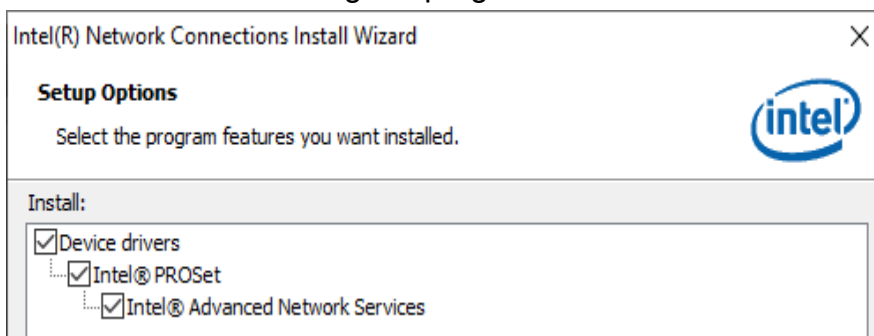
- When the Welcome screen appears, click **Next**.



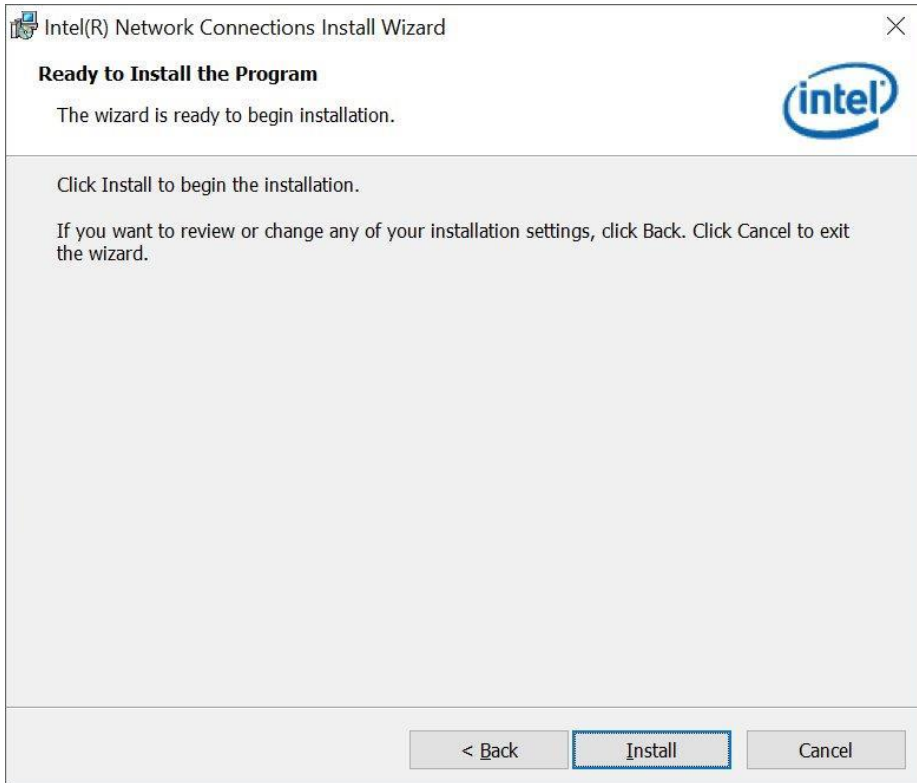
- Choose "I accept the terms in the license agreement" and click **Next**.



- Click **Next** after selecting the program features as shown below.



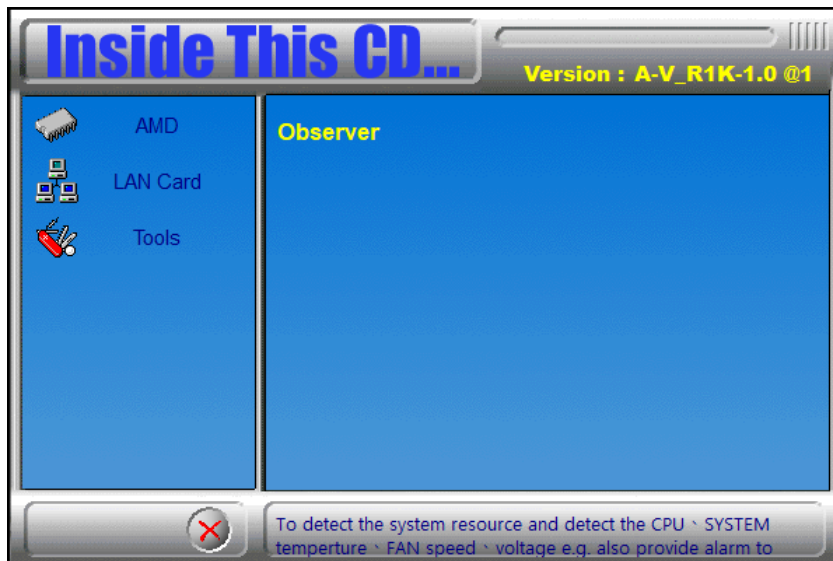
6. On the next screen, click **Install** to install the program.



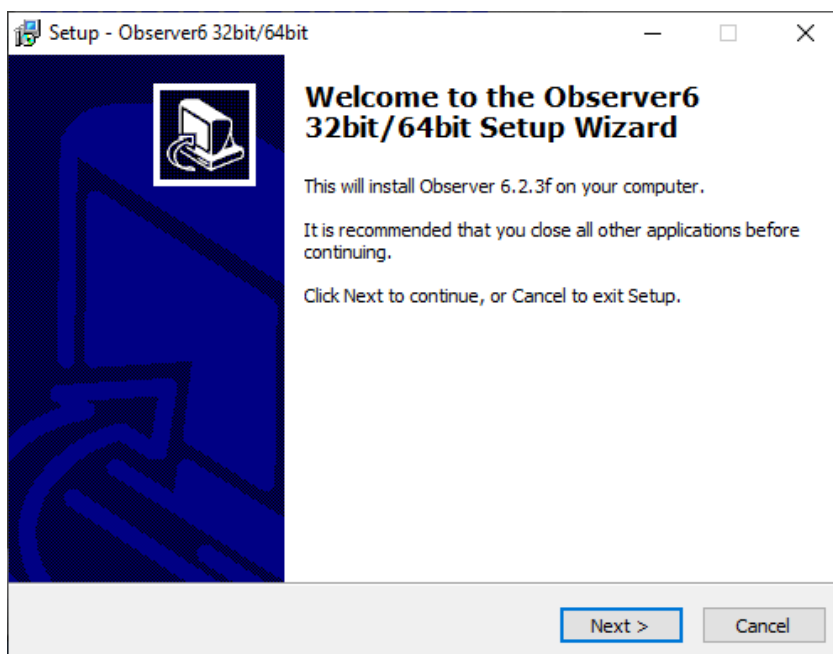
7. When the wizard has successfully installed the Program, restart your computer for changes to take effect.

3.6 Observer

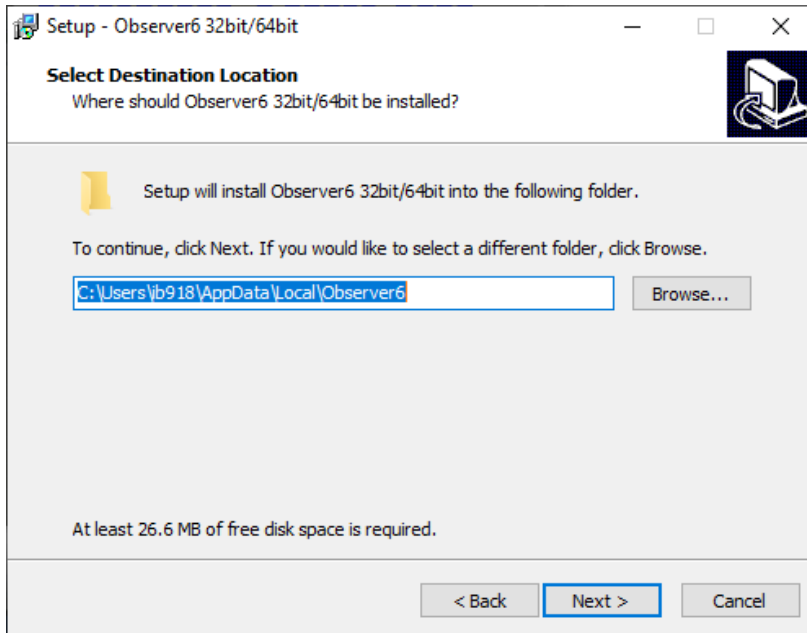
1. Click **Tools** on the left pane and then **Observer** on the right pane.



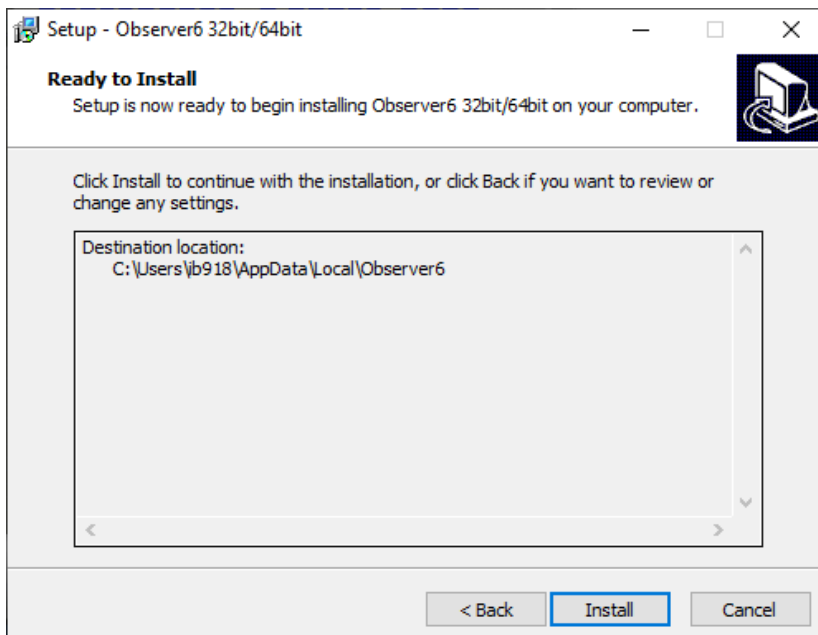
2. Click **Next** when the Welcome screen appears to continue installing the Observer on your computer.



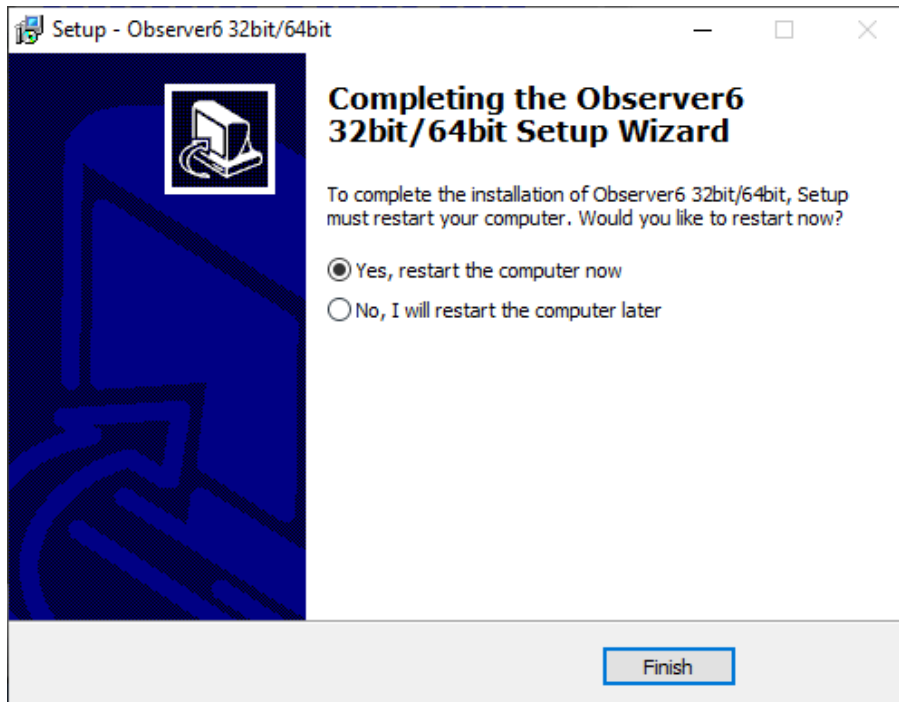
3. The next screen shows the destination location where Observer will be installed. Click **Next**.



4. Setup is now ready to begin installing Observer on your computer. Click **Install**.



5. To complete the installation of Observer, Setup must restart your computer. Restart the computer by clicking Finish for changes to take effect.



Chapter 4

BIOS Setup

This chapter describes the different settings available in the AMI BIOS that comes with the board. The topics covered in this chapter are as follows:

- Main Settings
- Advanced Settings
- Chipset Settings
- Boot Settings
- Security Settings
- Save & Exit

4.1 Installations

The BIOS (Basic Input/Output System) installed in the ROM of your computer system supports AMD APU. The BIOS provides critical low-level support for standard devices such as disk drives and serial ports. It also provides password protection as well as special support for detailed fine-tuning of the chipset controlling the entire system.

4.1 BIOS Setup

The BIOS provides a Setup utility program for specifying the system configurations and settings. The BIOS ROM of the system stores the Setup utility. When you turn on the computer, the BIOS is immediately activated. Pressing the key immediately allows you to enter the Setup utility. If you are a little bit late pressing the key, POST (Power On Self Test) will continue with its test routines, thus preventing you from invoking the Setup.

If you still need to enter Setup, restart the system by pressing the "Reset" button or simultaneously pressing the <Ctrl>, <Alt> and <Delete> keys. You can also restart by turning the system Off and back On again.

The following message will appear on the screen:

```
Press <DEL> to Enter Setup
```

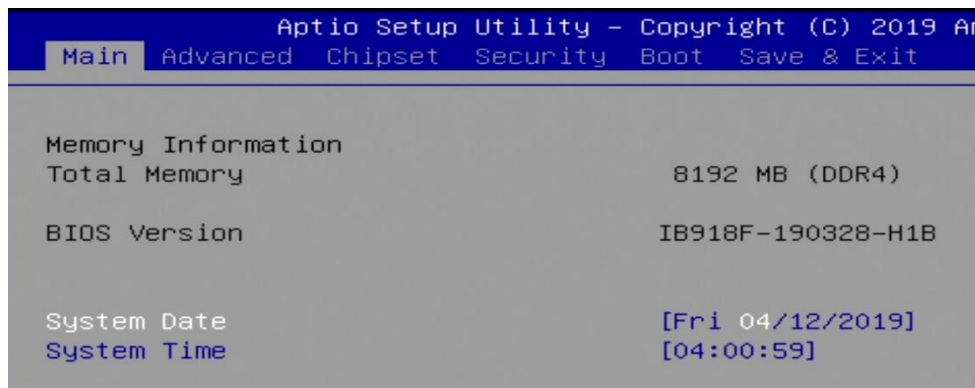
In general, press the arrow keys to highlight items, <Enter> to select, the <PgUp> and <PgDn> keys to change entries, <F1> for help, and <Esc> to quit.

When you enter the BIOS Setup utility, the *Main Menu* screen will appear on the screen. The Main Menu allows you to select from various setup functions and exit choices.

Warning: It is strongly recommended that you avoid making any changes to the chipset defaults.

These defaults have been carefully chosen by both AMI and your system manufacturer to provide the absolute maximum performance and reliability. Changing the defaults could make the system unstable and crash in some cases.

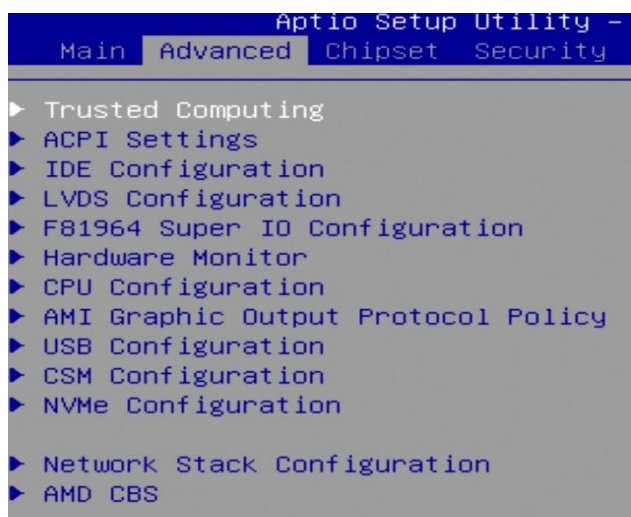
4.2 Main Settings



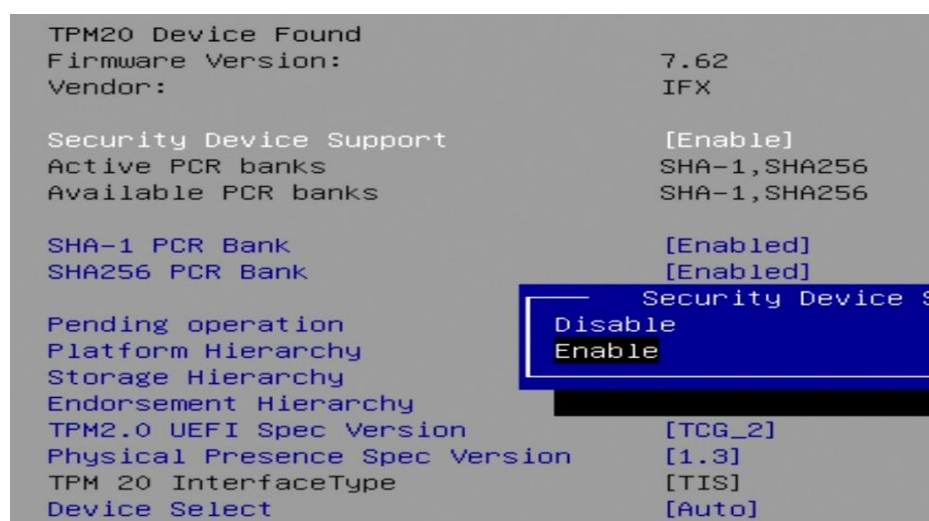
BIOS Setting	Description
System Date	Sets the date. Use the <Tab> key to switch between the date elements.
System Time	Set the time. Use the <Tab> key to switch between the time elements.

4.3 Advanced Settings

This section allows you to configure, improve your system and allows you to set up some system features according to your preference.



4.4.1 Trusted Computing Settings



BIOS Setting	Description
Security Device Support	Enables or Disables BIOS support for security device. OS will now show Security Device. TCG EFI protocol and INT1A interface will not be available (Default: Enable)
SHA-1 PCR Bank	Enable or Disable (Default: Enable)
SHA-256 PCR Bank	Enable or Disable (Default: Enable)
Pending operation	Schedule an operation for the security device. Note: Your computer will reboot during restart in order to change state of security device. Options: None, TPM Clear (Default: None)
Platform Hierarchy	Enable or Disable (Default: Enable)
Storage Hierarchy	Enable or Disable (Default: Enable)
Endorsement Hierarchy	Enable or Disable (Default: Enable)
TPM2.0 UEFI Spec Version	Select the tCG2 spec version support. TCG_1_2: the compatible mode for Win8/Win10 TCG_2: Support new tCG2 protocol and event format for Win10 or later. (Default: TCG_2)
Physical Presence Spec Version	Select to tell OS to support PPI spec version 1.2 or 1.3. Note some HCK tests might not support 1.3. (Default: 1.3)
Device Select	TPM 1.2 will restrict support to TPM 1.2 devices. TPM 2.0 will restrict support to TPM 2.0 devices. Auto will support both with the default set to TPM 2.0 devices if not found. TPM 1.2 devices will be enumerated. (Default: Auto)

4.4.2 ACPI Settings

ACPI Settings	
Enable ACPI Auto Configuration	[Disabled]
Enable Hibernation	[Enabled]
ACPI Sleep State	[S3 (Suspend to RAM)]

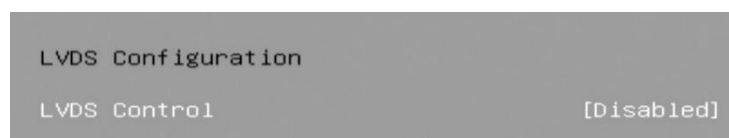
BIOS Setting	Description
Enable ACPI Auto Configuration	Enables / Disables BIOS ACPI auto configuration.
Enable Hibernation	Enables / Disables the system ability to hibernate (OS/S4 Sleep State). This option may not be effective with some OS.
ACPI Sleep State	Selects an ACPI sleep state where the system will enter when the Suspend button is pressed. (Default: S3 (Suspend to RAM))

4.4.3 IDE Configuration

Aptio Setup Utility - Copyright (C) 2019 American Megatrends, Inc.	
Advanced	
IDE Configuration	
SATA Port0	Not Present
SATA Port1	Not Present
	++: Select Screen ↑↓: Select Item Enter: Select +/-: Change Opt. F1: General Help F2: Previous Values F3: Optimized Defaults F4: Save & Exit ESC: Exit
Version 2.20.1273. Copyright (C) 2019 American Megatrends, Inc.	

BIOS Setting	Description
SATA Ports	Detects the connection of SATA0 and SATA1.

4.4.4 LVDS Configuration



The IDOOH-215-PC is default “Enables” and set panel type to 1920x1080.

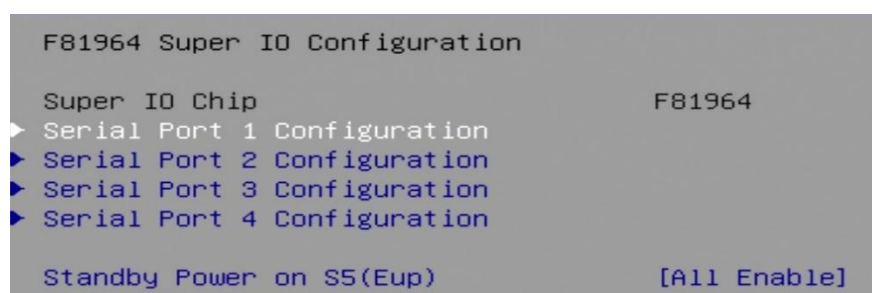
BIOS Setting	Description
LVDS Control	Enables / Disables the LVDS function.

When enabled, LVDS Control will show the following items with their options:

1. Panel Color Depth: 18 BIT / 24 BIT
2. LVDS Channel Type: Single / Dual
3. Panel Type: 800x480, 800x600, 1024x768, 1280x768, 1280x800, 1280x960, 1280x1024, 1366x768, 1440x900, 1600x900, 1600x1200, 1680x1050, **1920x1080**, 1920x1200
4. LVDS Backlight Control: 0(Min), 1, 2, 3, 4, 5, 6, 7(Max)

Note: Do not change the BIOS LVDS settings, otherwise the display will be abnormal. If the display abnormal, please try to load default in BIOS setting.

4.4.5 F81964 Super IO Configuration



BIOS Setting	Description
Serial Port 1/2/3/4 Configuration	Set parameters of Serial Port 1/2/3/4
Standby Power on S5(EuP)	[Enable] Provide the standby power for devices. [Disable] Shutdown the standby power.

Serial Port 1 Configuration

Serial Port	[Enabled]
Device Settings	IO=3F8h; IRQ=4;
Change Settings	[Auto]
SERIAL PORT MODE SELECT	[RS232 Mode]

Serial Port 2 Configuration

Serial Port	[Enabled]
Device Settings	IO=2F8h; IRQ=3;
Change Settings	[Auto]

Serial Port 3 Configuration

Serial Port	[Enabled]
Device Settings	IO=3E8h; IRQ=10;
Change Settings	[Auto]

Serial Port 4 Configuration

Serial Port	[Enabled]
Device Settings	IO=2E8h; IRQ=11;
Change Settings	[Auto]

Standby Power on S5(Eup) [All Enable]

Standby Power on S5(Eup)	[All Enable]
All Enable	
Enable Ethernet for WOL	
All Disable	

4.4.6 Hardware Monitor

```

Pc Health Status

CPU Fan smart fan control           [Disabled]
CPU temperature                     : +41 C
System temperature                  : +66 C
Fan1 Speed                           : 0 RPM
Vcore                               : +0.816 V
+5V                                  : +5.129 V
+12V                                  : +12.144 V
Memory Voltage                       : +1.192 V
VCC3V                                : +3.312 V

CPU Shutdown Temperature            [Disabled]
  
```

BIOS Setting	Description
CPU Fan Smart Fan Control	Enables / Disables the CPU smart fan feature.
Temperatures / Fan Speed / Voltages	The values are read-only values as monitored by the system and show the PC health status.
CPU Shutdown Temperature	Enables / Disables the CPU shutdown temperature function.

```

— CPU Fan smart fan control —
Disabled
50 C
60 C
70 C
80 C
  
```

```

— CPU Shutdown Temperature —
Disabled
70 C/158 F
75 C/167 F
80 C/176 F
85 C/185 F
90 C/194 F
95 C/203 F
  
```

4.4.7 CPU Configuration

```
CPU Configuration
Node 0 Information
```

```
Socket0: AMD Ryzen Embedded V1202B with Radeon Vega Gfx
2 Core(s) Running @ 2324 MHz 1218 mV
Processor Family: 17h
Processor Model: 10h-1Fh
CPUID: 00810F10
```

BIOS Setting	Description
Node 0 Information	Displays the memory information related to Node 0.

4.4.8 AMI Graphic Output Protocol Policy

```
RAVEN
AMD GOP X64 Release Driver Rev.2.5.0.0.0.Dec 5 2018.17:1..
Output Select [DFP2_DP]
```

BIOS Setting	Description
Output Select	Allows you to select an output interface.

4.4.9 USB Configuration

```

USB Configuration

USB Module Version                21

USB Controllers:
  2 XHCIs
USB Devices:
  1 Keyboard

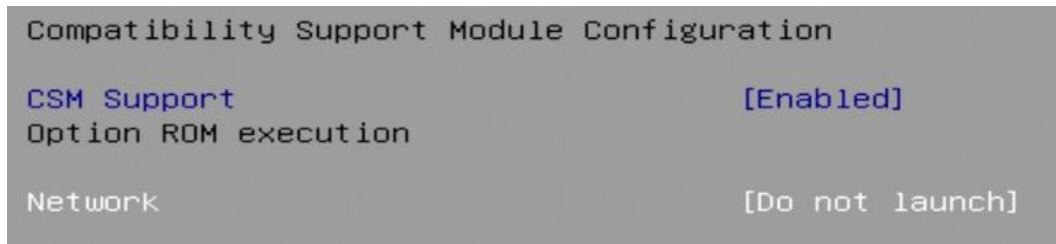
Legacy USB Support                [Enabled]
XHCI Hand-off                    [Enabled]
USB Mass Storage Driver Support  [Enabled]
Port 60/64 Emulation             [Enabled]

USB hardware delays and time-outs:
USB transfer time-out            [20 sec]
Device reset time-out           [20 sec]
Device power-up delay           [Auto]

```

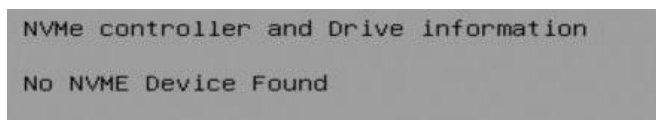
BIOS Setting		Description
Legacy Support	USB	Enables Legacy USB support. <ul style="list-style-type: none"> • Auto disables legacy support if there is no USB device connected. • Disable keeps USB devices available only for EFI applications.
XHCI Hand-off		This is a workaround for Oses without XHCI hand-off support. The XHCI ownership change should be claimed by XHCI driver.
USB Mass Storage Support	Mass Driver	Enables / Disables the support for USB mass storage driver.
USB transfer time-out		The time-out value for control, bulk, and Interrupt transfers. Options: 1 sec / 5 sec / 10 sec / 20 sec
Device reset time-out		Seconds of delaying execution of start unit command to USB mass storage device. Options: 10 sec / 20 sec / 30 sec / 40 sec
Device power-up delay		The maximum time the device will take before it properly reports itself to the Host Controller. Auto uses default value for a Root port it is 100ms. But for a Hub port, the delay is taken from Hub descriptor. Options: Auto / Manual

4.4.10 CSM Configuration

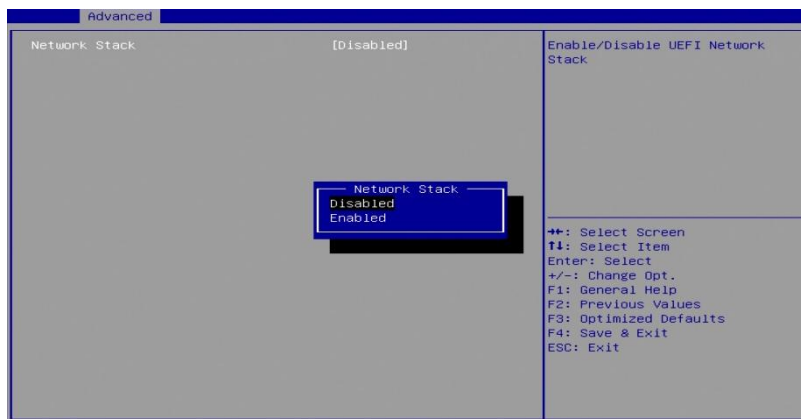


BIOS Setting	Description
CSM Support	Enables / Disables CSM support.
Network	Controls the execution of UEFI and Legacy PXE OpROM. Options: Do not launch UEFI / Legacy

4.4.11 NVMe Configuration



4.4.12 Network Stack Configuration

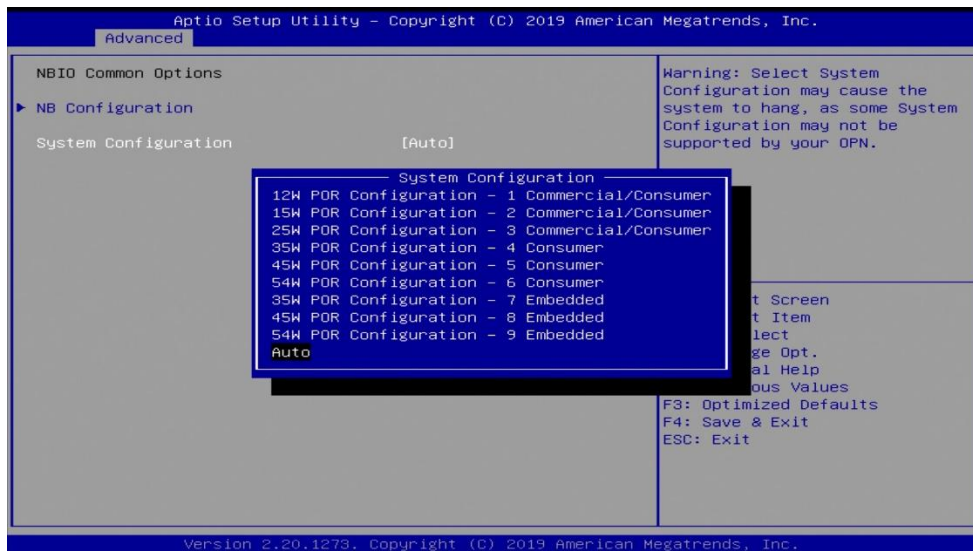


BIOS Setting	Description
Network Stack	Enables / Disables UEFI Network Stack.

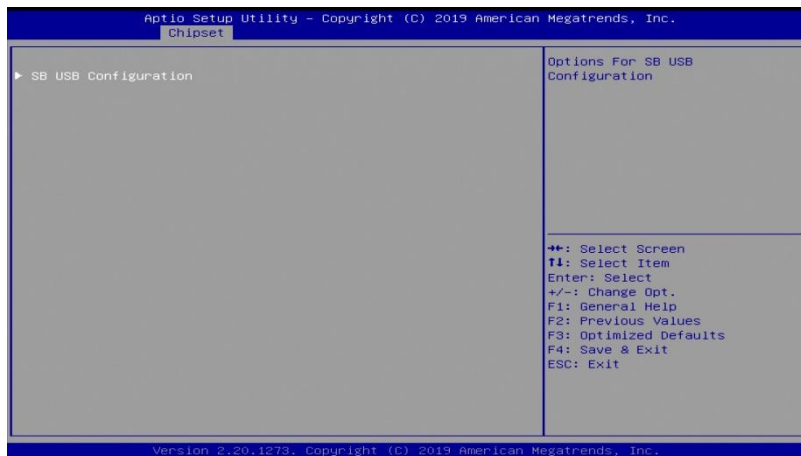
4.4.13 AMD CBS



BIOS Setting	Description
NB Common Options	This is for the NB configuration for IOMMU settings and system configuration.
FCH Common Options	Here you can set the AC loss control method with options of: Always Off / Always On



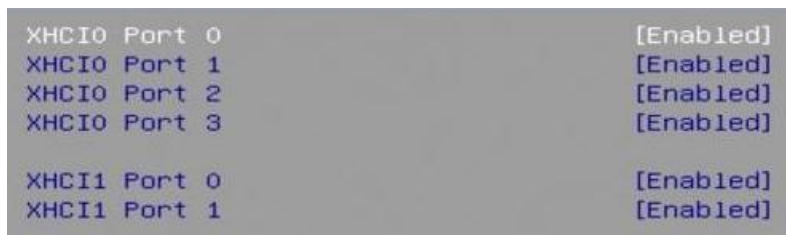
4.4 Chipset Settings



4.5.1 SB USB Configuration

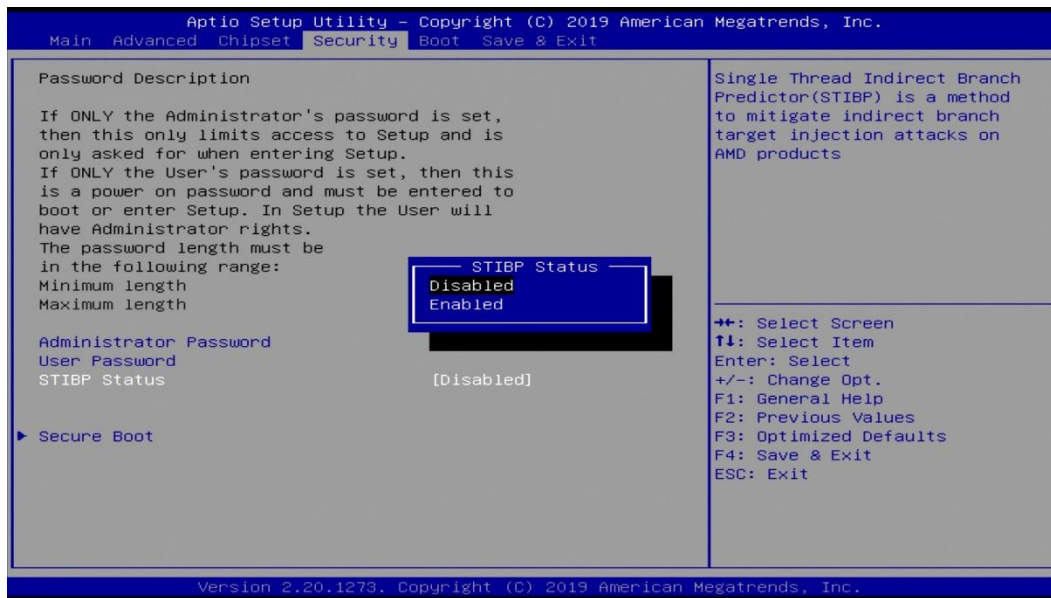
BIOS Setting	Description
SB USB Configuration	Options for SB USB Configuration.

4.5.1.1. XHCI Ports



BIOS Setting	Description
XHCI0 & XHCI1 Ports	Enables / Disables the XHCI0 & XHCI1 ports (XHCI/EMCI).

4.5 Security Settings



BIOS Setting	Description
Administrator Password	Sets an administrator password for the setup utility.
User Password	Sets a user password.
STIBP Status	Single Thread Indirect Branch Predictor (STIBP) is a method to mitigate indirect branch target injection attacks on AMD products. Options: Disabled , Enabled
Secure Boot	Secure Boot feature is Active if Secure Boot is enabled. Platform Key (PK) is enrolled and the system is in user mode. The mode change requires platform reset.
Secure Boot Mode	Secure Boot mode options: Standard or Custom. In custom mode, secure boot policy variables can be configured by a physically present user without full authentication.

4.6 Boot Settings

```

Boot Configuration
Setup Prompt Timeout          1
Bootup NumLock State         [Off]
Quiet Boot                    [Disabled]

Boot mode select              [UEFI]

FIXED BOOT ORDER Priorities
Boot Option #1                [Hard Disk]
Boot Option #2                [CD/DVD]
Boot Option #3                [SD]
Boot Option #4                [USB Hard Disk]
Boot Option #5                [USB CD/DVD]
Boot Option #6                [USB Key]
Boot Option #7                [USB Floppy]
Boot Option #8                [USB Lan]
Boot Option #9                [Network]

```

BIOS Setting	Description
Setup Prompt Timeout	Number of seconds to wait for setup activation key. 65535(0xFFFF) means indefinite waiting.
Bootup NumLock State	Selects the keyboard NumLock state.
Quiet Boot	Enables / Disables Quiet Boot option.
Boot mode select	Selects a Boot mode, Legacy / UEFI.
Boot Option Priorities	Sets the system boot order.

```

Setup Prompt Timeout          1
Bootup NumLock State         [On]
Quiet Boot                    [Disabled]

Driver Option Priorities
Boot mode select              [UEFI]

FIXED BOOT ORDER Priorities
Boot Option #1                [Hard Disk]
Boot Option #2                [CD/DVD]
Boot Option #3                [SD]
Boot Option #4                [USB Hard Disk]
Boot Option #5                [USB CD/DVD]
Boot Option #6                [USB Key]
Boot Option #7                [USB Floppy]
Boot Option #8                [USB Lan]
Boot Option #9                [Network]

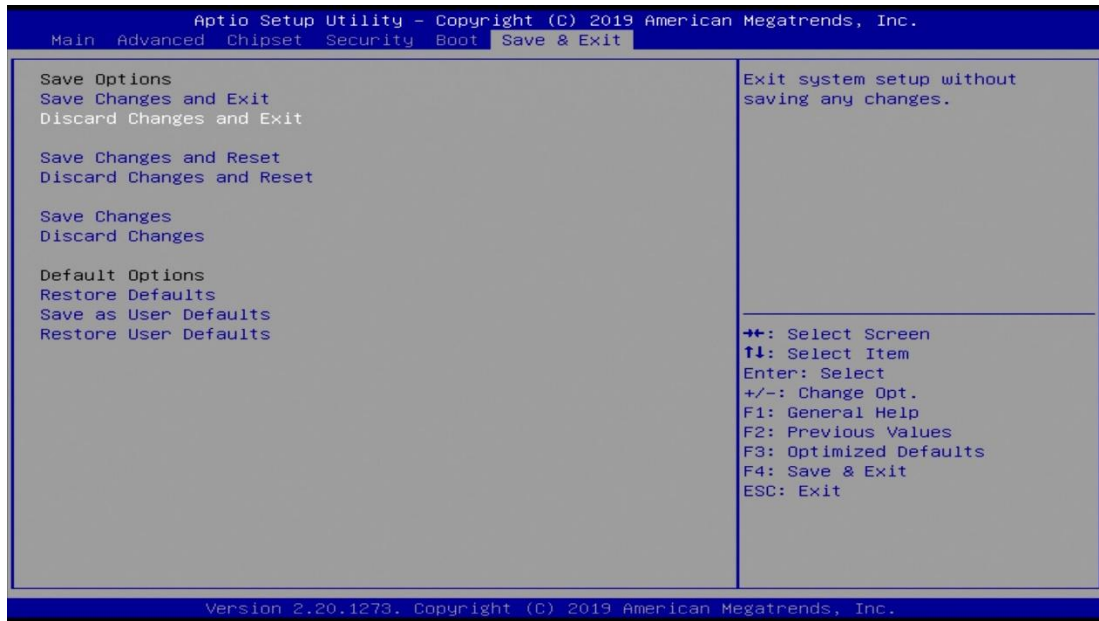
```

```

— Boot Option #1 —
Hard Disk
CD/DVD
SD
USB Hard Disk
USB CD/DVD
USB Key
USB Floppy
USB Lan
Network
Disabled

```

4.7 Save & Exit



BIOS Setting	Description
Save Changes and Exit	Exits system setup after saving the changes.
Discard Changes and Exit	Exits system setup without saving any changes.
Save Changes and Reset	Resets the system after saving the changes.
Discard Changes and Reset	Resets system setup without saving any changes.
Save Changes	Saves changes done so far to any of the setup options.
Discard Changes	Discards changes done so far to any of the setup options.
Restore Defaults	Restores / Loads defaults values for all the setup options.
Save as User Defaults	Saves the changes done so far as User Defaults.
Restore User Defaults	Restores the user defaults to all the setup options.

This page is intentionally left blank.

Chapter 5

Motherboard Information

IDOOH-215-PC uses the IB918F motherboard. For more information, please see the related links below:

Motherboard Manual

<https://drive.google.com/drive/folders/13eW7ggtV3ZdA5dLo7az61ywjwja09hQoT>

Motherboard Datasheet

https://www.ibase.com.tw/english/download/Embedded_Computing/Disk-Size_SBCs/IB918_Datasheet.pdf

Note: Do not change the BIOS LVDS settings, otherwise the display will be abnormal. If the display abnormal, please try to load default in BIOS setting.