

IBD196

Quick Guide V1.0

Mini-PCIE to M.2 Adapter

IBD196 is designed to convert mini-PCIE interface to M.2 (NGFF) for system configuration flexibility with the use of a standard M.2 Key E socket.

Features

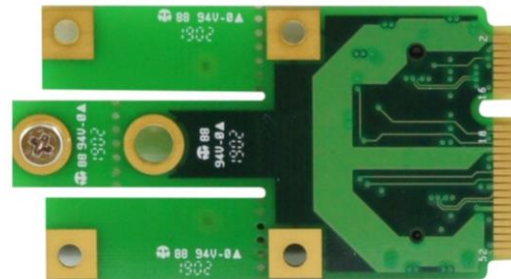
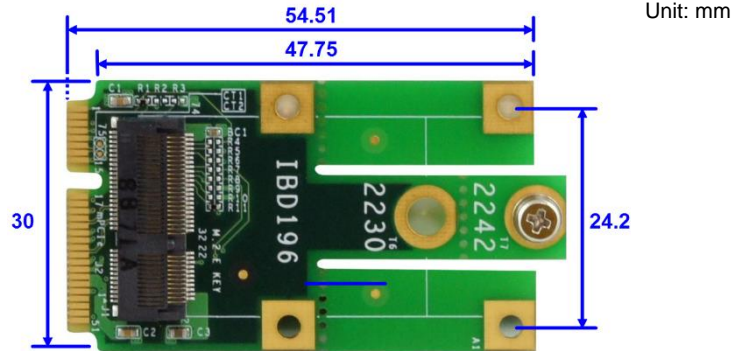
- Mini-PCIE to M.2 E2230 / E2242 conversion
- Mini-PCIE card with PCIe (x1) and USB
- Applicable to Desktop or Laptop

Packing List

- Flat Head Screw x 1

Specifications

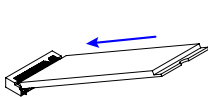
Form Factor	Mini-PCIE Card
Interface	Mini-PCIE with PCIe (x1) and USB
Connector	1 x M.2 E2230 / E2242 slot
Dimensions	54.5 x 30 mm (2.15" x 1.77")
RoHS	Yes
Temperature	Operating: 0 ~ 60 °C (-32 ~ 140 °F) Storage: -20 ~ 80 °C (-4 ~ 176 °F)
Relative Humidity	10 ~ 90 %, no condensation



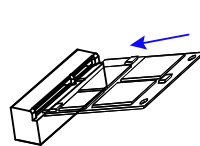
Installation

1. Locate the mini-PCIE slot on your device or system, align the key of the IBD196 mini-PCIE card to the interface, and insert the IBD194 card slantwise.
2. Push the IBD194 card down, and fix it with the supplied two flat head screws.

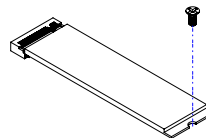
M.2 card:



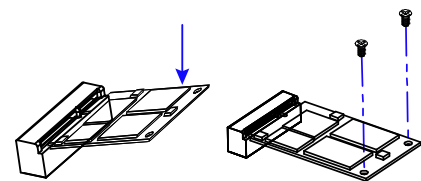
Mini-PCIE card:



M.2 card:



Mini-PCIE card:



© 2018 IBASE Technology, Inc. All rights reserved.

All the trademarks, registrations and brands mentioned herein are used for identification purposes only and may be trademarks and/or registered trademarks of their respective owners.

Warranty This product is backed by a two-year warranty for IBASE standard parts and by a one-year warranty for 3rd-party parts. IBASE warrants its products against defects in materials following the initial date of shipment during the period of warranty but does not warrant its products from damages or defects arising from misuse, unauthorized repair or abuse.

Technical Support If repair service is required, contact your distributor or sales representative or visit our website at www.ibase.com.tw.