

# IBD195

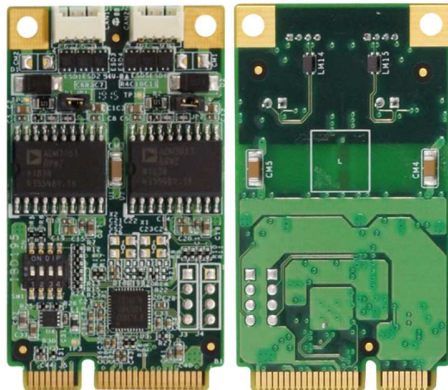
## CAN BUS Card

### PCI Express Mini Card V1.0

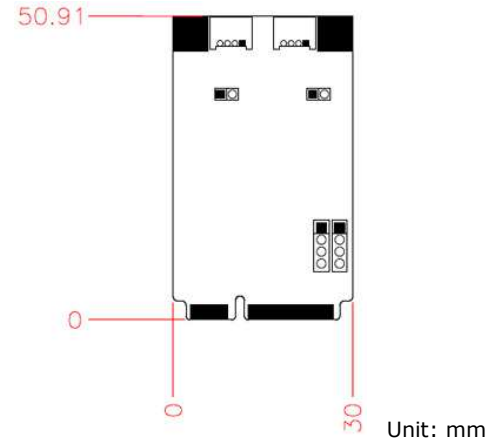
User guide 1.0

### IBD195 Specifications

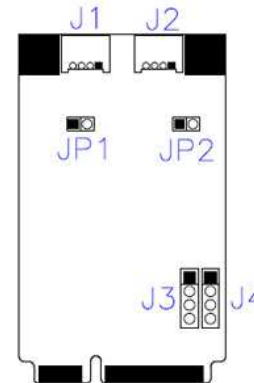
<b>Form Factor</b>	Full-Size PCI Express® Mini card	
<b>Main Chip</b>		
- Fintek F81601N PCIe to 2 x CAN bus controller		
Package =40-QFN/ 5mm x 5mm; Operating temperature = -40 to +85 degree C		
<b>PARAMETER</b>	<b>RATING</b>	<b>UNIT</b>
Power Supply Voltage	-0.5 to 3.6	V
Input Voltage	-0.5 to VCC+0.5	V
Operating Temperature	-40 to +85	° C
Storage Temperature	-55 to 150	° C
- ADM3053BRWZ-REEL7 digital isolators		
Package = SIP-7; Operating temperature = -40 to +85 degree C		
<b>Onboard header</b>	4-segment dip switch	
<b>Operation Temperature</b>	0°C~ 70°C (32° ~ 149°F)	
<b>Storage Temperature</b>	-20°C~ 80°C	
<b>Relative Humidity</b>	10% ~ 90% (non-condensing)	
<b>RoHS Compliant</b>	2.0	
<b>Card Size</b>	Dimensions = 50.95 mm x 30 mm x 1mm Component height limitation: - Component side: 3.2 mm ; Solder side: 1.35 mm	



### Card Dimensions



### Jumpers and Connectors



#### JP1 / JP2: 120 Ohm Terminal Resistor

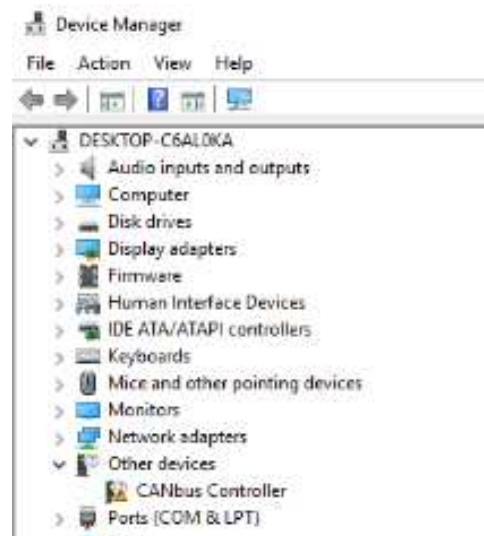
JP1 /JP2	120 Ohm
Short	ON (default)
Open	OFF

#### J1 / J2: Can Bus Connector

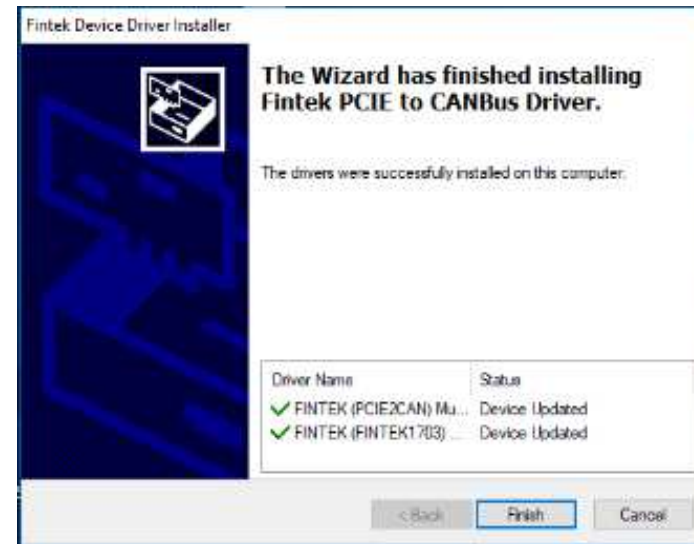
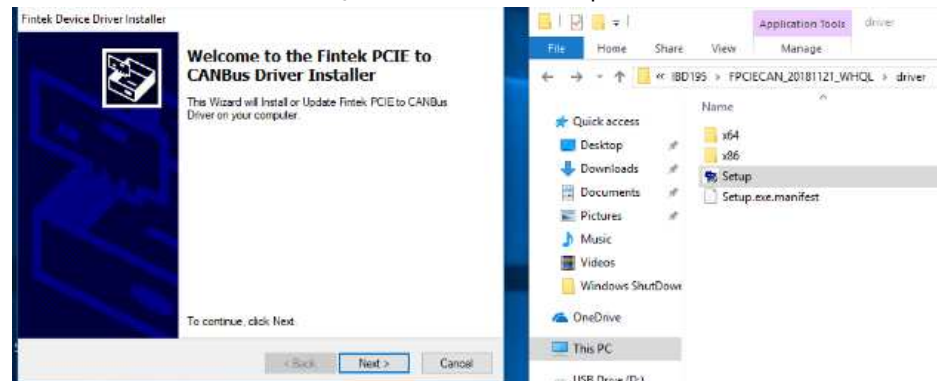
Pin	Signal Name
1	CNA_DH1
2	Ground
3	CNA_DL1
4	Ground

## Mini PCI-E CAN Bus Card Driver Installation

When the driver is not installed, an exclamation mark will appear in the Device Manager.



Run the setup file to install the driver using the following path:  
FPCIECAN\_20181121\_WHQL → driver → Setup.exe



After installing the CANBUS driver, click **Finish** and reboot the system.



Under Ports (COM& LPT), the Device Manager will show **two** CANBus ports.

