

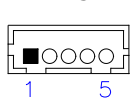
IBD186 EXAR XR17V352 Mini PCI-E With two Isolated Serial Ports Adaptor Card

IBD186 User guide 1.0

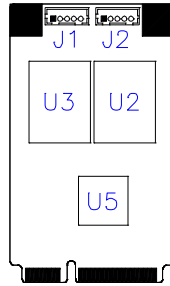
Connectors pin definition

J1 J2: COM2/1 Serial Ports

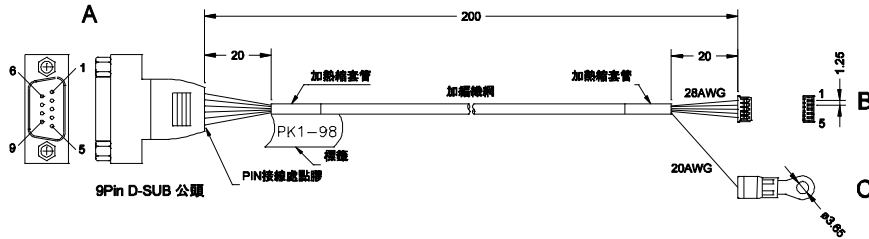
Matching connector: Molex 51021-0500



Pin #	Signal Name
1	TX
2	RX
3	RTS
4	CTS
5	GND_ISO



IBD186 and PK1-98 Mechanical Drawing



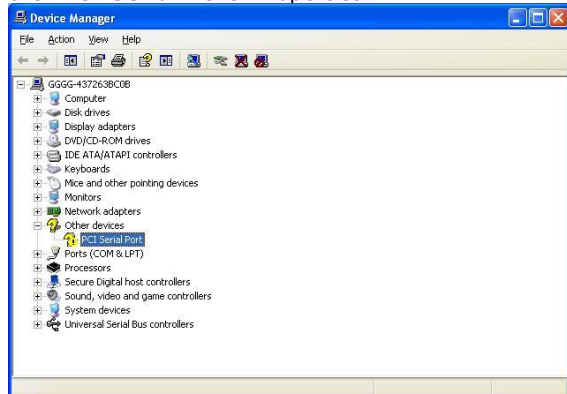
Signal Name	Pin #	Pin #	Signal Name
Not Used	1	6	Not Used
RXD, Receive data	2	7	RTS
TXD, Transmit data	3	8	CTS
Not Used	4	9	Not Used
GND_ISO, ground	5	10	Not Used

IBD 186 x 1 and PK1-98 x 2

IBD186 COM PORT DRIVERS are available at www.ibase.com.tw/2009/drivers.html

Mini PCI-E Serial Ports Driver Installation

1. In the Windows Device Manager, 'Other devices' shown below, right click the "PCI Serial Port" Properties.

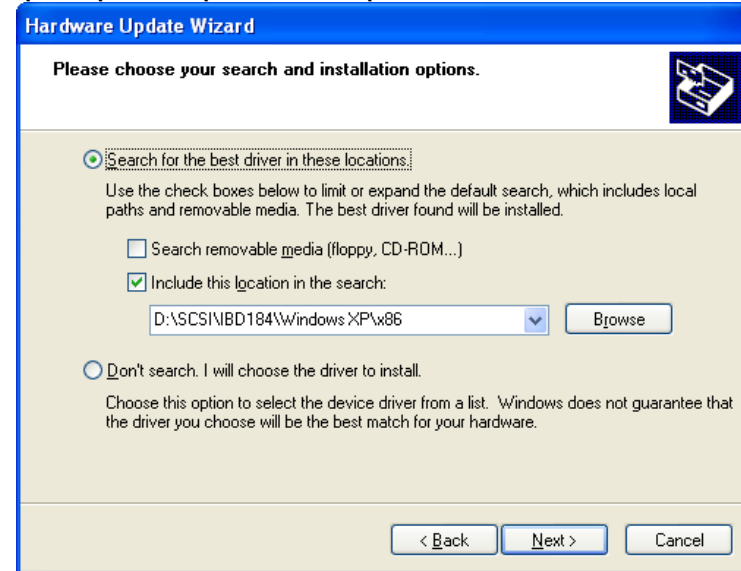


2. In the PCI Serial Port Properties screen, click **Reinstall Driver**.

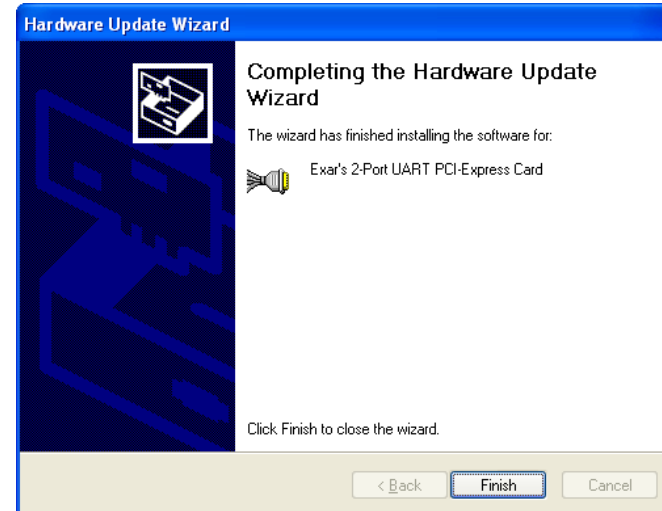
3. In the Hardware Update Wizard screen, select "No, not this time" and click **Next** to continue.

4. Select "Install from a list or specific location (Advanced)", and click **Next** to continue.

5. Choose "search" and "installation" options, click the checkbox of "Include this location in the search", and click **Browse** to find the driver's path in the CD provided or enter the path directly - `\\SCSI\IBD184\Windows XP\x86`



6. Click **Next**.



7. Click **Finish** to close the wizard.

8. There are two serial ports. Therefore, the Hardware Update Wizard procedure will be repeated for the other serial port.