

IBD184 EXAR XR17V354 Mini PCI-E Serial Ports Adaptor Card

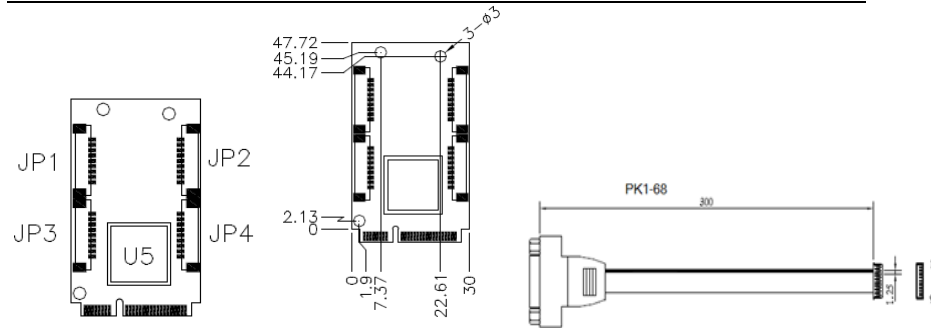
IBD184 User guide 1.0

Connectors pin definition

JP1 : COM2
 JP2 : COM1
 JP3 JP4: COM3/4 Serial Ports
 Matching connector: Molex P/N 51021-0900

Pin #	Signal Name
1	DCD, Data carrier detect
2	RXD, Receive data
3	CTS, Clear to send
4	GND, ground
5	TXD, Transmit data
6	RTS, Request to send
7	DSR, Data set ready
8	DTR, Data terminal ready
9	RI, Ring indicator

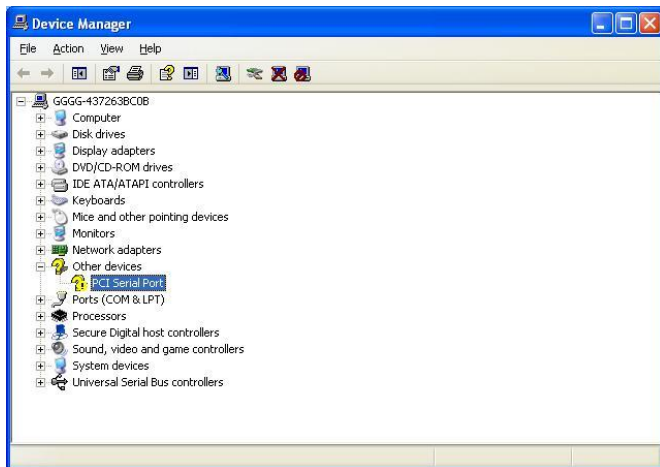
IBD184 and Pk1-68 Mechanical Drawing



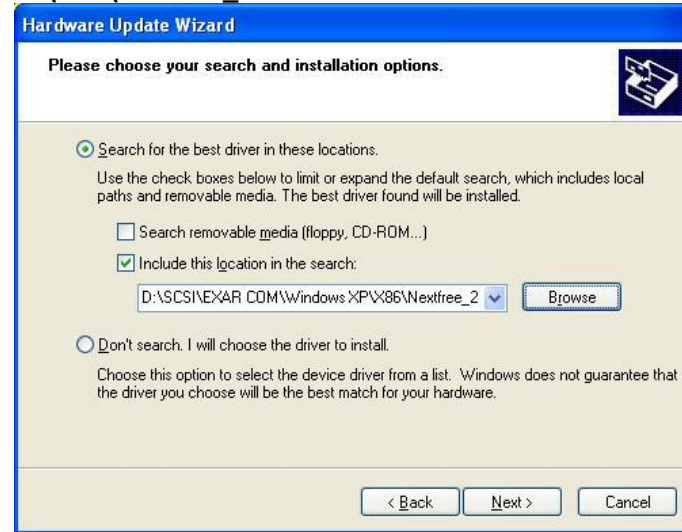
IBD 184 x 1 and PK1-68 x 4

Mini PCI-E Serial Ports Driver Installation

1. In the Windows OS, go to the Computer Management screen. In the 'Other devices' as shown, right click the "PCI Serial Port" Properties.



2. In the PCI Serial Port Properties screen, click **Reinstall Driver**.
3. In the Hardware Update Wizard screen, select "No, not this time" and click **Next** to continue.
4. Select "Install from a list or specific location (Advanced)", and click **Next** to continue.
5. Choose "search" and "installation" options, click the checkbox of "Include this location in the search", and click **Browse** to find the driver's path in the CD provided or enter the path directly - `\\SCSI\EXAR COM\Windows XP\X86\Nextfree_24`



6. Click **Continue Anyway**.



7. Click **Finish** to close the wizard.
8. There are four serial ports. Therefore, the Hardware Update Wizard procedure will be repeated for the other serial port.