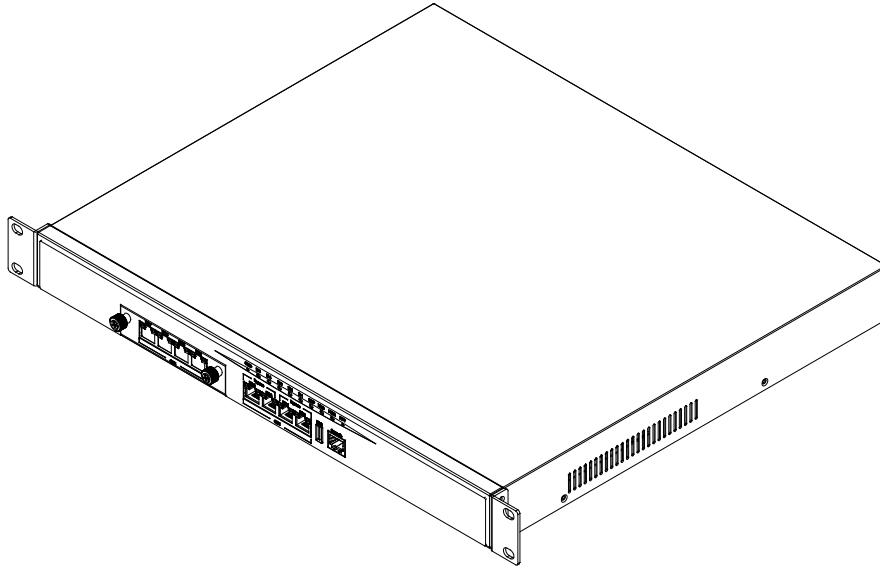


# FWA-7108

## User Manual



2009 May V1.0

**Copyright © 2008 IBASE Technology INC. All Rights Reserved.**

No part of this manual, including the products and software described in it, may be reproduced, transmitted, transcribed, stored in a retrieval system, or translated into any language in any form or by any means, except documentation kept by the purchaser for backup purposes, without the express written permission of IBASE Technology INC. ("IBASE").

Products and corporate names mentioned in this manual may or may not be registered trademarks or copyrights of their respective companies, and are used for identification purposes only. All trademarks are the property of their respective owners.

Every effort has been made to ensure that the contents of this manual are correct and up to date. However, the manufacturer makes no guarantee regarding the accuracy of its contents, and reserves the right to make changes without prior notice.

## Table of Contents

|  |           |
|--|-----------|
| <b><i>Accessories</i></b> .....                            | <b>6</b>  |
| <b><i>Components</i></b> .....                             | <b>7</b>  |
| <b><i>Front View</i></b> .....                             | <b>7</b>  |
| <b><i>Specification</i></b> .....                          | <b>9</b>  |
| <b><i>Exploded view of the FWA-7108 assembly</i></b> ..... | <b>10</b> |
| <b><i>Parts description</i></b> .....                      | <b>11</b> |
| <b><i>Driver Installation</i></b> .....                    | <b>12</b> |
| <b><i>BIOS Setup</i></b> .....                             | <b>12</b> |

# Safety Information

Your FWA-7108 is designed and tested to meet the latest standards of safety for information technology equipment. However, to ensure your safety, it is important that you read the following safety instructions.

## ***Setting up your system***

- Read and follow all instructions in the documentation before you operate your system.
- Do not use this product near water.
- Set up the system on a stable surface or secure on wall with the provided rail. Do not secure the system on any unstable plane or without the rail.
- Do not place this product on an unstable cart, stand, or table. The product may fall, causing serious damage to the product.
- Slots and openings on the chassis are for ventilation. Do not block or cover these openings. Make sure you leave plenty of space around the system for ventilation. Never insert objects of any kind into the ventilation openings.
- This system should be operated from the type of power indicated on the marking label. If you are not sure of the type of power available, consult your dealer or local power company.
- Use this product in environments with ambient temperatures between 0°C and 45°C.
- If you use an extension cord, make sure that the total ampere rating of the devices plugged into the extension cord does not exceed its ampere rating.

## ***Care during use***

- Do not walk on the power cord or allow anything to rest on it.
- Do not spill water or any other liquids on your system.
- When the system is turned off, a small amount of electrical current still flows. Always unplug all power, and network cables from the power outlets before cleaning the system.
- If you encounter the following technical problems with the product, unplug the power cord and contact a qualified service technician or your retailer.
  - The power cord or plug is damaged.
  - Liquid has been spilled into the system.
  - The system does not function properly even if you follow the operating instructions.

- The system was dropped or the cabinet is damaged.

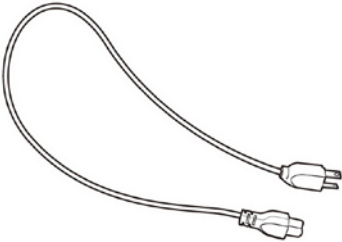

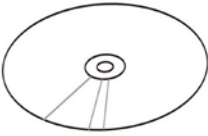
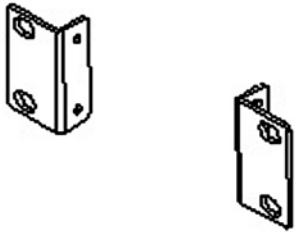
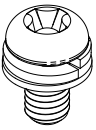
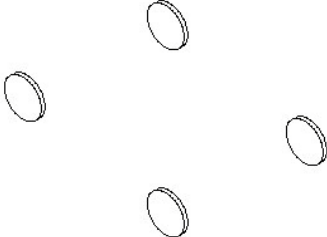
### **Lithium-Ion Battery Warning**

**CAUTION:** Danger of explosion if battery is incorrectly replaced. Replace only with the same or equivalent type recommended by the manufacturer. Dispose of used batteries according to the manufacturer's instructions.

### **NO DISASSEMBLY**

The warranty does not apply to the products that have been disassembled by users

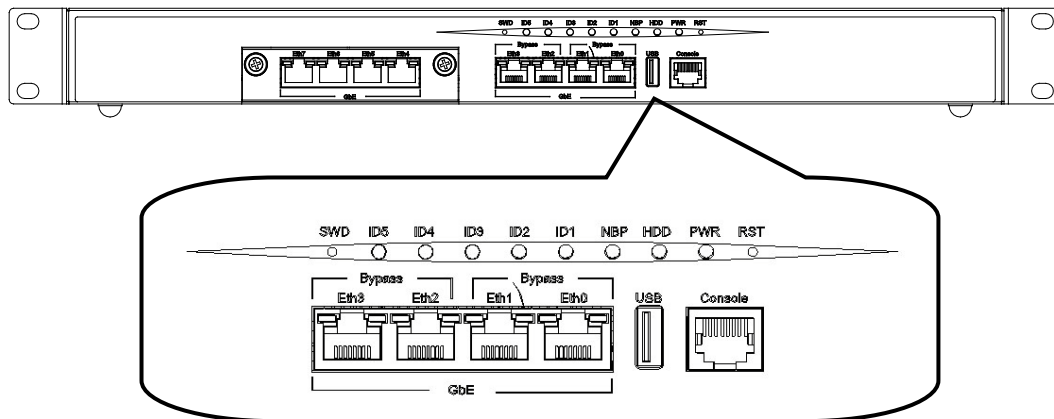
## Accessories

|   |  |
|---|--|
|    |    |
| a. Power Cord x 1   | b. M/B Manual x 1  |
|    |    |
| c. Driver CD x 1  | d. Rack Mount Bracket x 1  |
|  |  |
| e. Rack Mount Screw x 6   | f. Rubber Foot x 5   |

# Components

## Front View

Refer to the diagram below to identify the components on this side of the system.



### RST

The reset switch allows reset the system.

### PWR

The power LED illuminated when system been power on.

### HDD

The hard disk LED blinks when data is being written into or read from the hard disk drive.

### NBP

Bypass feature indicator. Bright for bypass.

### ID1 ~ ID5

There are user programmable indicators. Each indicator can be program to specify status indicator. The detail programming method please refer M/B user manual.

### SWD

Reserved.

**USB**

The USB (Universal Serial Bus) port is compatible with USB devices such as keyboards, mouse devices, cameras, and hard disk drives. USB allows many devices to run simultaneously on a single computer, with some peripheral acting as additional plug-in sites or hubs.

**Console**

There is standard RS232 serial port present by RJ45 connector format. The detail usage please refers to M/B user manual.

**Eth0 ~ Eth7 (GbE)**

The eight-pin RJ-45 LAN port supports a standard Ethernet cable for connection to a local network up to Giga-bit transfer rate.

**Bypass**

The bypass function is used to link/short two independent Ethernet ports which indicated with "Bypass" text when user's application software halt or when power is off.

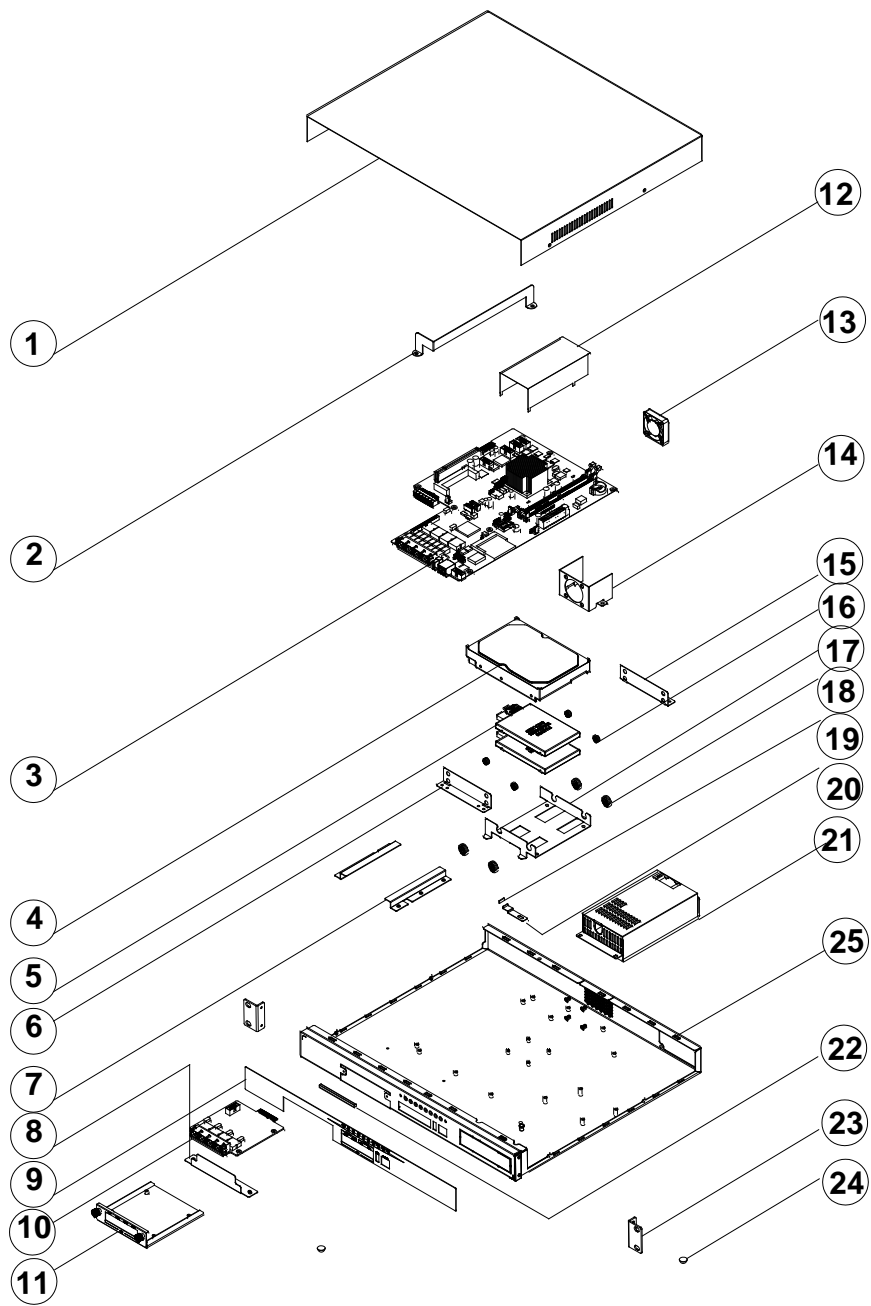


## Specification

|                              |  |
|------------------------------|--|
| <b>System Mainboard</b>      | MB835  |
| <b>Construction</b>          | Steel  |
| <b>Chassis Color</b>         | Black  |
| <b>Storage</b>               | 3.5" SATA HDD x 1 or 2.5" SATA HDD x 2(Optional)     |
| <b>Mounting</b>              | Rack mount   |
| <b>Dimensions</b>            | 429.4(W) x 44(H) x 376(D)mm / (16.9" x 1.7" x 14.8") |
| <b>Power Supply</b>          | 180W Flex-ATX power supply                           |
| <b>Operating Temperature</b> | 0°C ~ 45°C (32°F ~ 113°F) chamber air                |
| <b>Storage Temperature</b>   | -20°C ~ 80°C   |
| <b>Relative Humidity</b>     | 10~95% @45°C (non-condensing)                        |
| <b>Vibration</b>             | HDD: 0.25g/5~500Hz random operation                  |
| <b>Shock</b>                 | HDD: 15g peak acceleration (11 msec duration)        |
| <b>RoHS</b>                  | Available  |

· This specification is subject to change without prior notice.

# Exploded view of the FWA-7108 assembly



## Parts description

| Part NO. | Description            | Part NO. | Description           |
|----------|------------------------|----------|-----------------------|
| 1        | Top Cover              | 2        | Riser Card Bracket    |
| 3        | MB835                  | 4        | 3.5" SATA HDD         |
| 5        | 2.5" SATA HDD          | 6        | 2.5" HDD Bracket Left |
| 7        | MI810F                 | 8        | Door of LAN Module    |
| 9        | Cosmetic Panel         | 10       | ID835 LAN Module      |
| 11       | Tray of LAN Module     | 12       | Air Duct              |
| 13       | System FAN             | 14       | System FAN Bracket    |
| 15       | 2.5" HDD Bracket Right | 16       | Damper of 2.5" HDD    |
| 17       | 3.5" HDD Bracket       | 18       | Damper of 3.5" HDD    |
| 19       | Sponge                 | 20       | CF Card Block         |
| 21       | Flex-ATX PSU           | 22       | EMI Gasket            |
| 23       | Rack Mount Bracket     | 24       | Rubber Foot           |
| 25       | Bottom Chassis         |          |                       |

## **Driver Installation**

Please refer correspond mainboard user manual to install the driver properly.

## **BIOS Setup**

Please refer correspond mainboard user manual to configure BIOS setting.