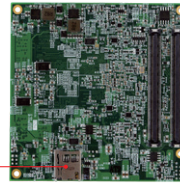


## Features

- Onboard Intel® Atom® Processor E3845/E3827
- 2x DDR3L SO-DIMM, Max. 8GB
- Single Gigabit LAN via carrier board (IP411)
- 2x SATA II, 1x USB 3.0, 8x USB 2.0, 2x COM via carrier board (IP411)
- Supports 2x independent displays, DisplayPort/CRT/LVDS via carrier board (IP411)
- Supports HD audio via carrier board (IP411)
- Wide-range operating temperature from -40°C to 85°C



MicroSD

## Specifications

CPU	Intel® Atom® Processor E3845/E3827
PCH	Integrated in Intel® Atom® SoC
Memory	2x DDR3L@1.35V SO-DIMM, Max. 8GB (Non-ECC)
BIOS	AMI
Watchdog Timer	256 levels
H/W Monitor	Yes
Storage Device interface	N/A
Expansion Slots	1x PCI-E(x1)
Graphics Controller	Intel® Atom® E3845/E3827 SoC integrated graphics Supports CRT, DisplayPort & LVDS
Video Output	24-bit single-channel LVDS on carrier board (IP411)
Ethernet	1x Intel® I210IT Gigabit LAN
I/O Chipset	Nuvoton NCT5523D
Serial Port	2x COM ports (Tx/Rx only))
USB 2.0	8x USB 2.0 via carrier board (Supports 6x USB 2.0 only on IP411)
USB 3.X	1x USB 3.0 via carrier board (IP411)
Serial ATA	2x SATA III ports via carrier board (IP411)
Audio	Intel® Atom® E3845/E3827 SoC built-in audio with Realtek ALC662 or ALC888S codec on carrier board (IP411)
TPM	N/A
Others	MicroSD slot on board@ rear side Digital I/O (4-in / 4-out) on carrier board (IP411)
Dimensions (L x W)	95mm x 95mm (3.74" x 3.74")
Power Consumption	Intel® Atom® E3845 1.91GHz w/ 2x 2GB DDR3L-1600 +12V: 0.91A; +5V: 0.13A; +5VSB: 0.05A; +3.3V: 0.24A
Operating Temperature	-40°C~85°C (-40°F~185°F)
Storage Temperature	-40°C~90°C (-40°F~194°F)
Relative Humidity	90% (non-condensing @60°C)

## Ordering Information

ET860-I45-LV	COM Express (Type-6) CPU Module w/ Intel® Atom® Processor E3845 (1.91GHz) SoC, DDR3L dual-channel memory, LVDS
ET860-I27-LV	COM Express (Type-6) CPU Module w/ Intel® Atom® Processor E3827 (1.75GHz) SoC, DDR3L dual-channel memory, LVDS
IP411	Mini-ITX COM Express (Type-6) carrier board
HSET860-BGA-A	Heatsink for ET860
HSET860-BGA-1	Heat Spreader for ET860

## Dimensions and Drawing

