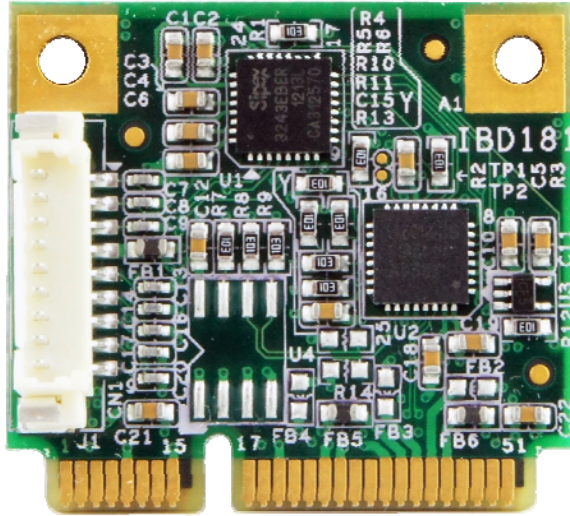


IBD181
EXAR XR21V1410
Serial Port Mini PCI-E Card(For RS-232)
User Guide
Version: 1.0



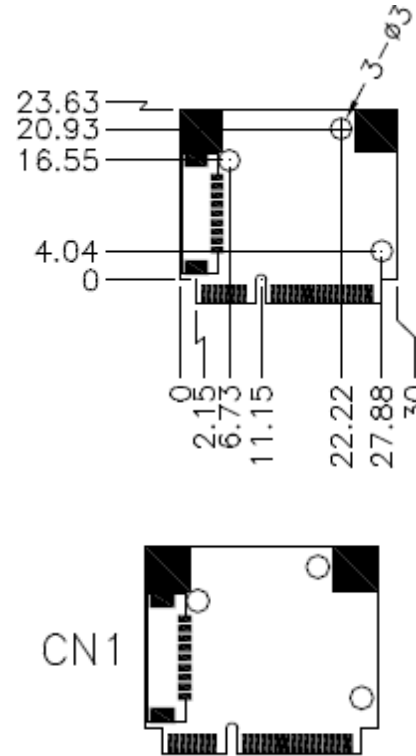
IBD181 Mini PCI-E Serial Port Card

CN1: COM1 Serial Ports

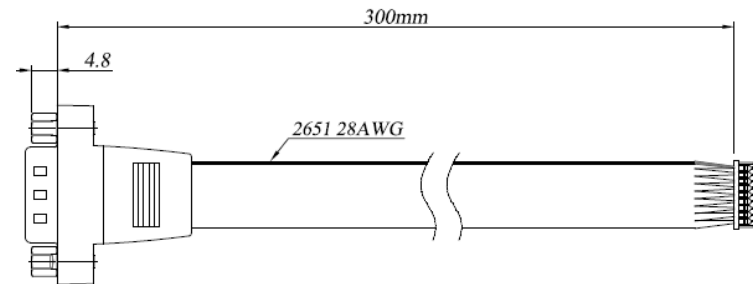
Matching connector: Molex P/N 51021-0900

Pin #	Signal Name
1	DCD, Data carrier detect
2	RXD, Receive data
3	CTS, Clear to send
4	GND, ground
5	TXD, Transmit data
6	RTS, Request to send
7	DSR, Data set ready
8	DTR, Data terminal ready
9	RI, Ring indicator

IBD181 Mechanical Drawing

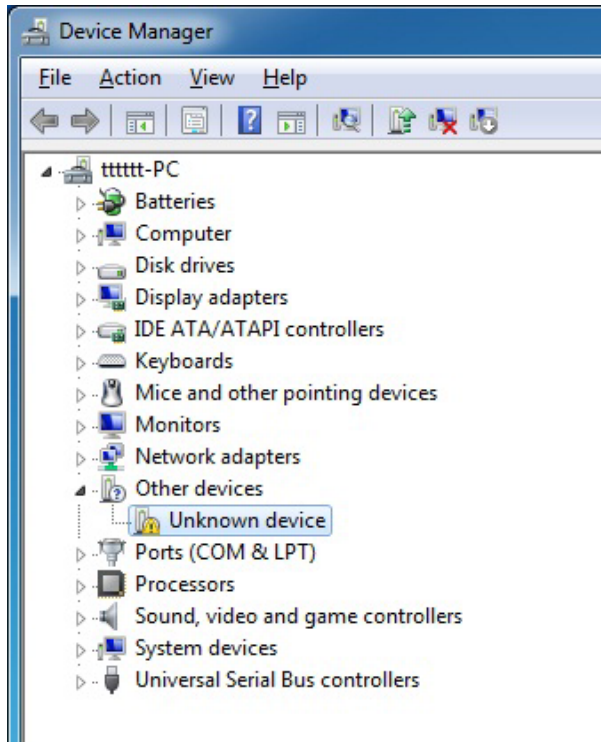


Cable Mechanical Drawing

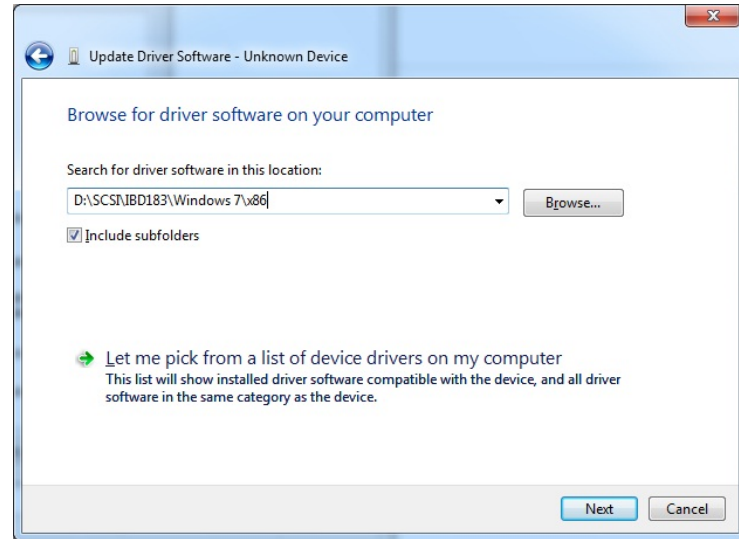


Mini PCI-E Serial Ports Driver Installation

1. In the Windows OS, go to the Computer Device Manager screen. In the "Other devices" as shown, right click "Unknown Device".
2. On the "Unknown Device Properties" screen, click Update Driver.



3. On the "Update Driver Software" screen, click *Browse* to find the driver's path in the DVD provided or enter the path directly – D:\SCSI\IBD183\Windows 7\x86, click *Next*.



4. The Setup process is now complete. Click *Close*.

