

The logo for iBASE, featuring the word "iBASE" in a bold, blue, sans-serif font. The letter "i" is lowercase and has a red dot above it. The letters "B", "A", "S", and "E" are uppercase and blue.

www.ibase.com.tw

The background features a blue gradient with a central globe showing the Americas. The globe is surrounded by white and light blue circuit-like lines and dots, suggesting a global network or technology theme. A large, stylized blue arrow shape points upwards from the bottom left towards the center.

廣積科技股份有限公司

(股票代號：8050)

法人說明會

110年12月15日

- 簡報內容(含本會議中所揭露之資訊)含有若干預測性資訊，僅供參考之用。廣積科技股份有限公司或任何第三人均不就該預測性資訊之正確性與完整性承擔任何責任，亦不負更新或更正該資訊之義務，請您務必謹慎審閱以上資訊。
- 如未經許可，亦請您切勿散播、重製或揭露以上資訊之一部份或全部予第三人。



公司簡介



財務資訊



研發實力



重點產品介紹



未來機會



Q&A



— 公司簡介

公司簡介



成立日期

2000年
2月



董事長

林秋旭



資本額

新台幣
17.7億元



員工人數

770
(集團/全球)
530
(總公司)

主要營業項目

工業用電腦產品
網路安全通訊產品

總公司

台北南港軟體園區
台灣

股票代碼

8050 (2003年上櫃)

全球營運據點



工廠介紹



3,481平方公尺 / 1,053坪

新北市三重

- 主機板生產
- 驗證

規模

300,851 平方英尺
(27,950 平方公尺 / 8,459 坪)

100%
台灣設計製造

產能

- SMT 產線 x 5
- DIP 組裝線 x 2
- 系統組裝線 x 10
- 無塵室 x 1
- 燒機室 x 13

認證



ISO 9001



ISO 14001



ISO 13485



ISO 27001



6,070平方公尺 / 1,840坪

新北市新莊

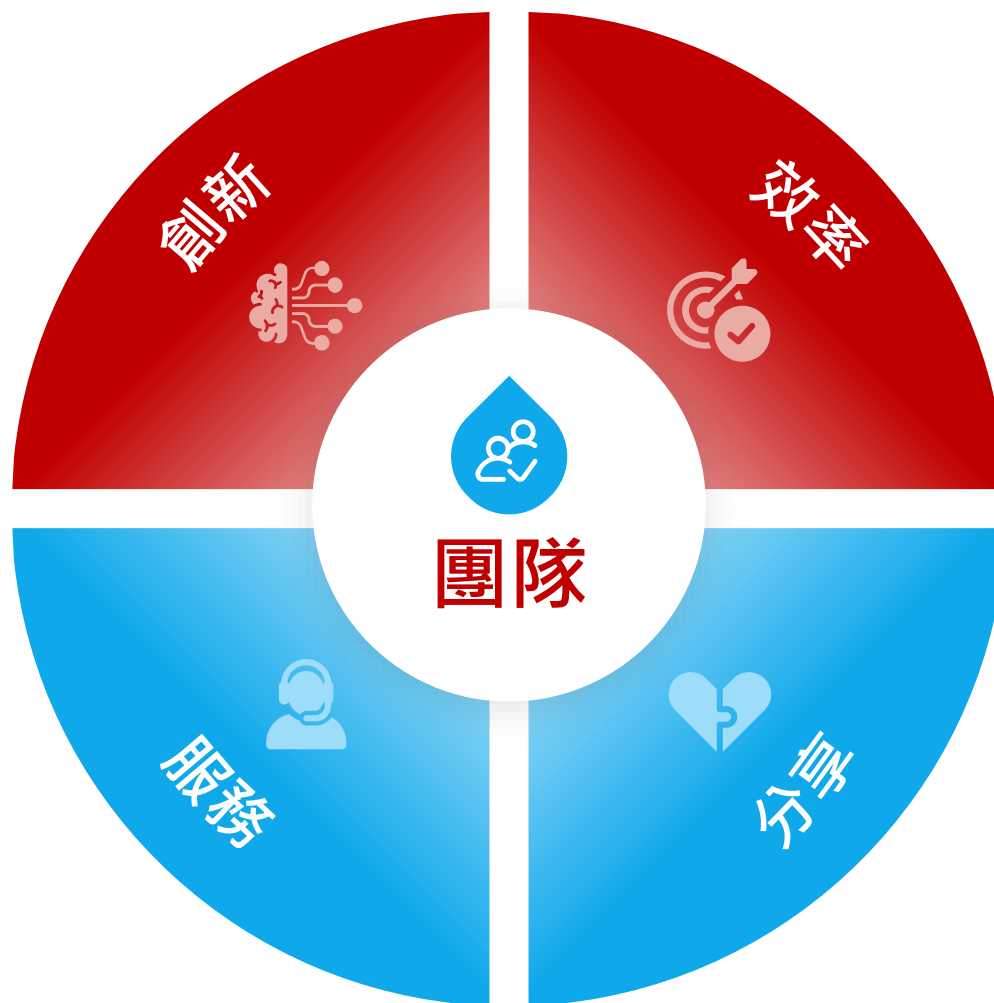
- 系統組裝
- 驗證

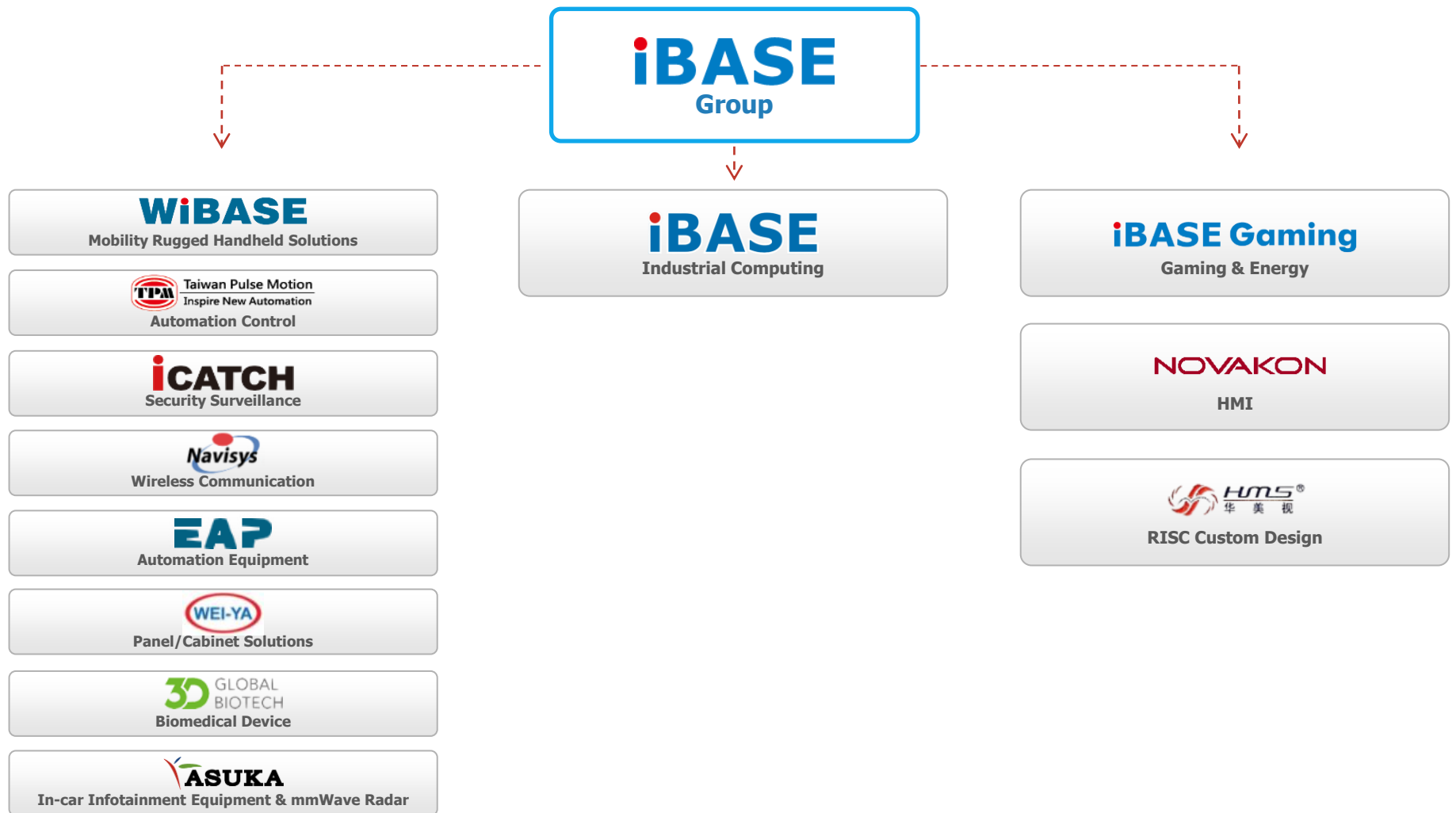


18,399平方公尺 / 5,566坪

桃園市平鎮

- 主機板生產
- 系統組裝
- 驗證

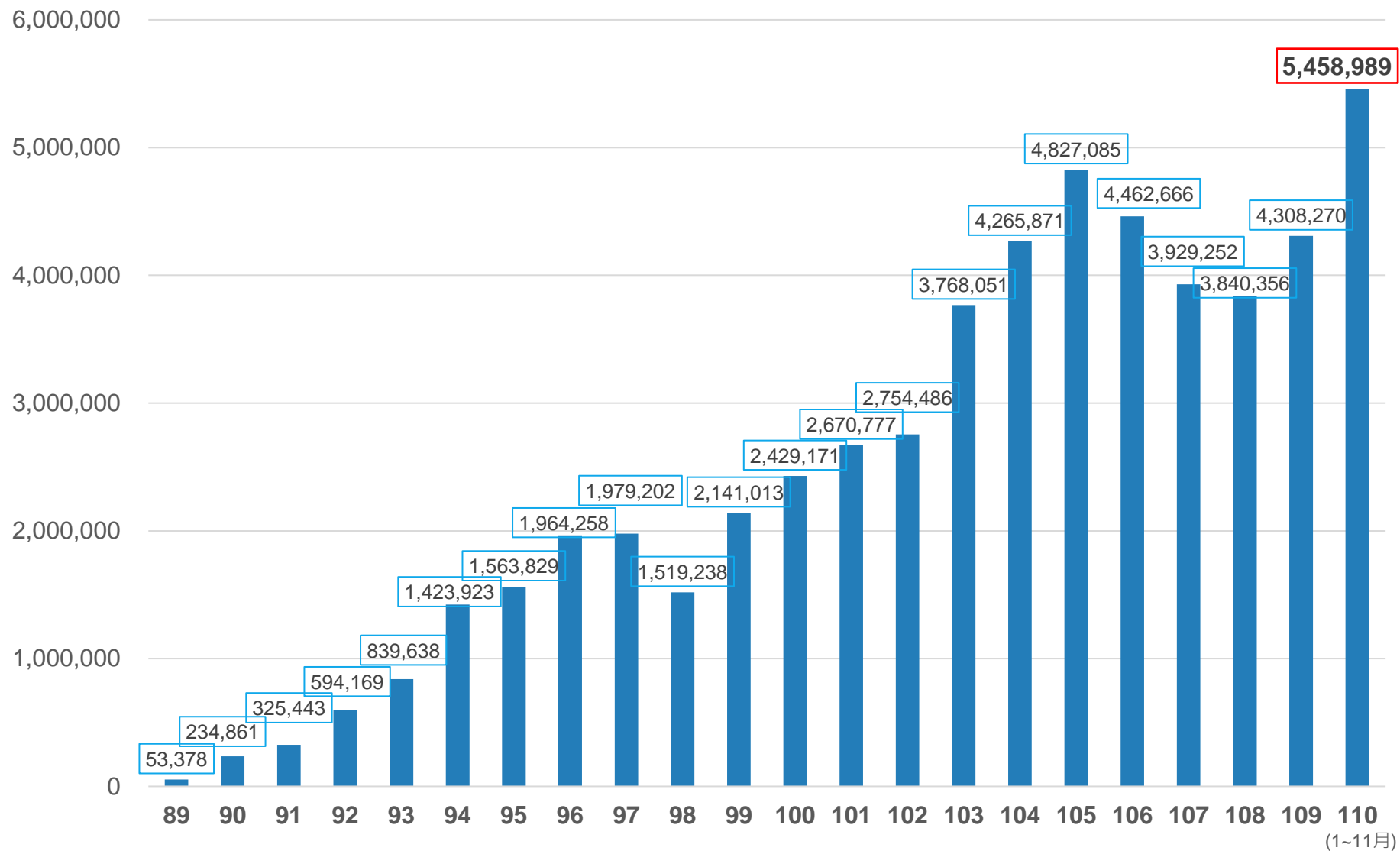




—
財務資訊

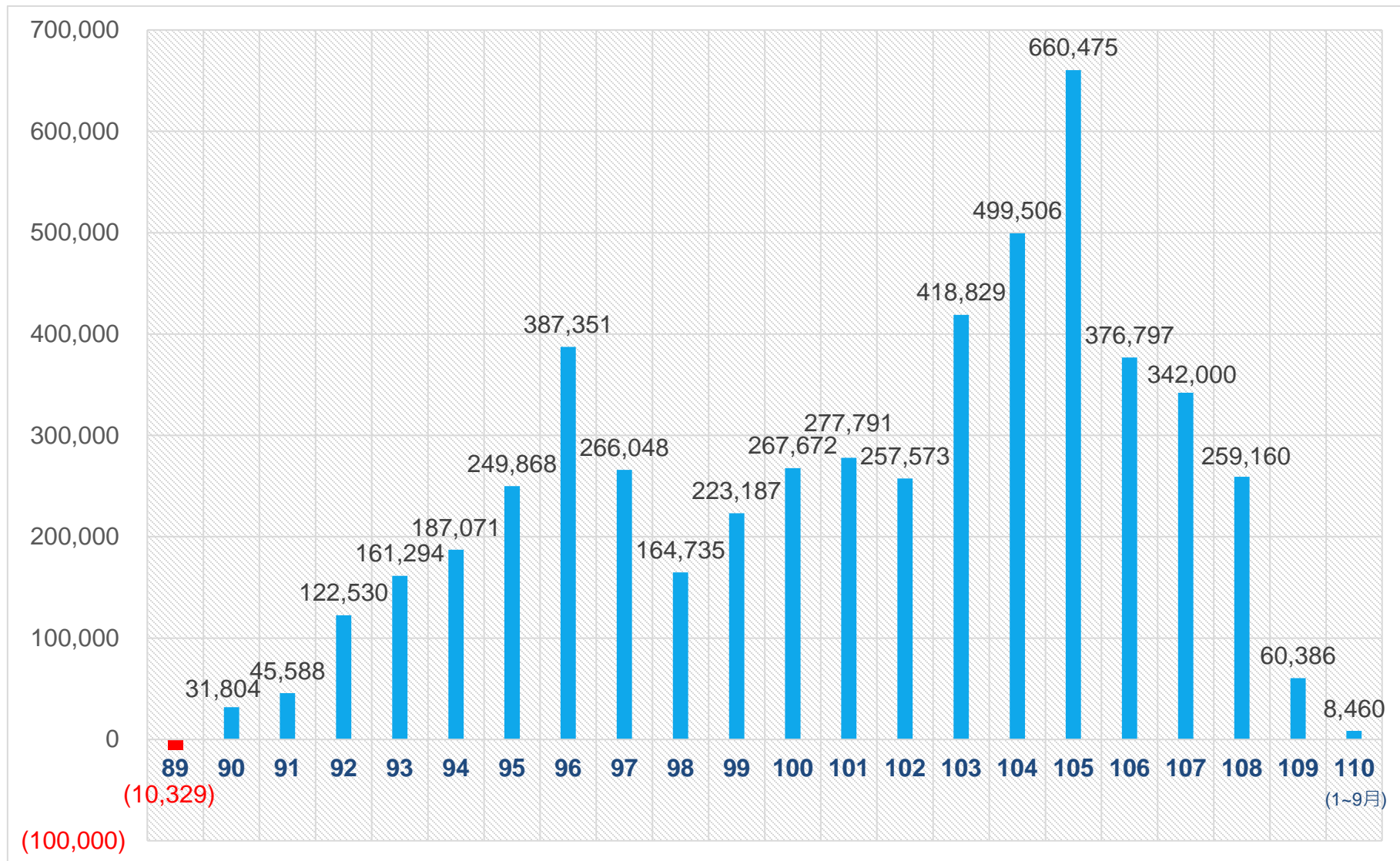
廣積合併89年~110年1-11月營業收入

單位: NTD / 仟



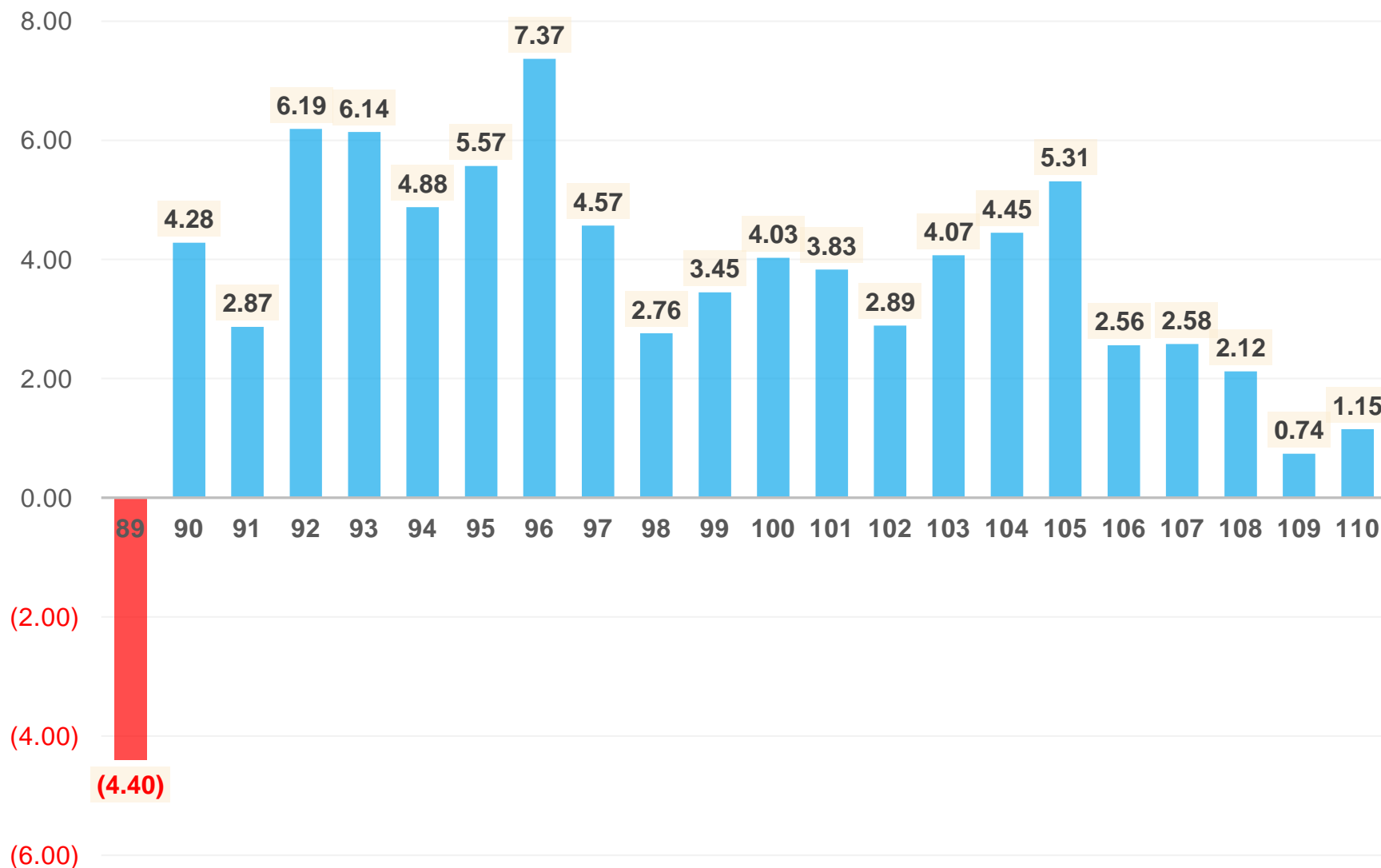
廣積合併89年~110年1-9月稅後淨利

單位: NTD / 仟



廣積89年~110年1-9月每股稅後盈餘EPS

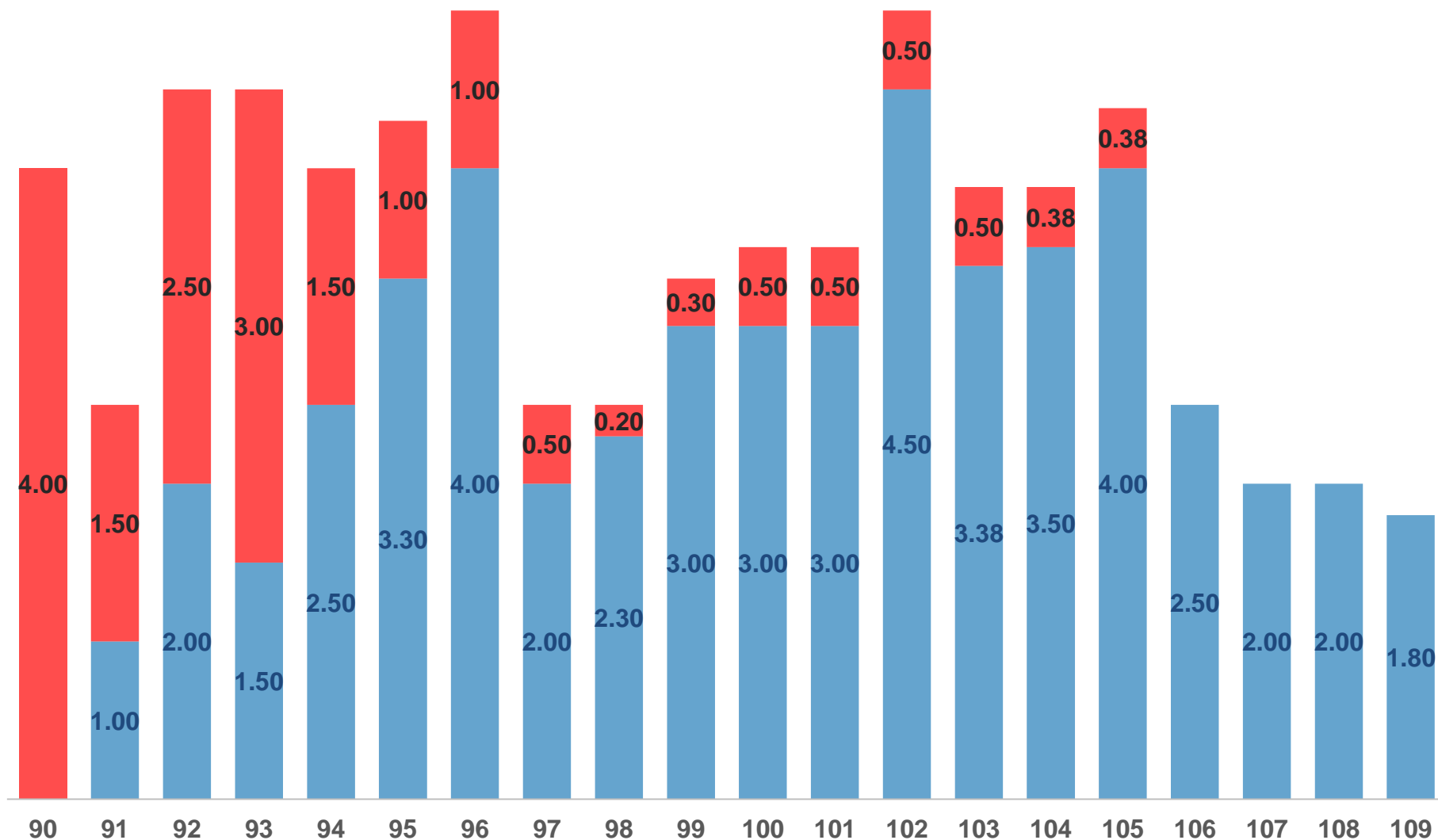
單位: NTD / 元



90年~109年股利資訊

單位: NTD / 元

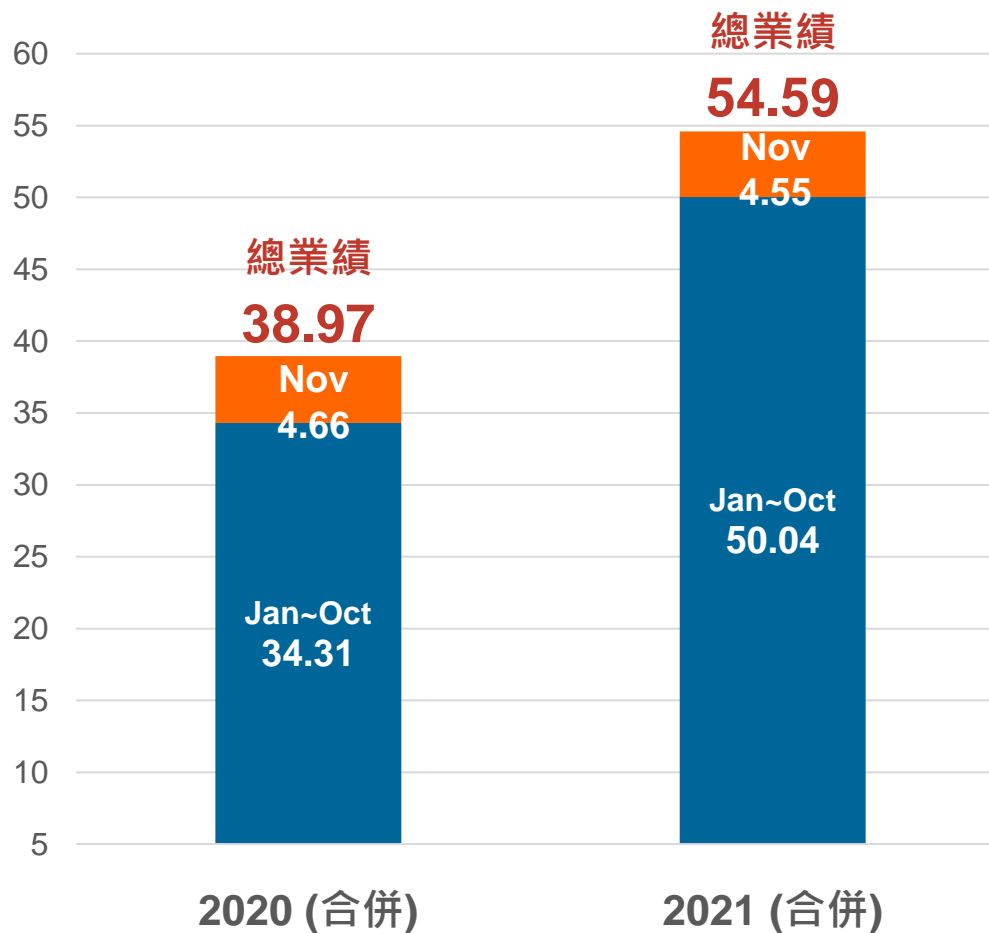
■ 現金股利(元) ■ 股票股利(元)



業績概況 – 廣積合併 2020 vs. 2021 (Jan~Nov)

2021 合併成長率 40%

單位: NTD / 億





— 研發實力

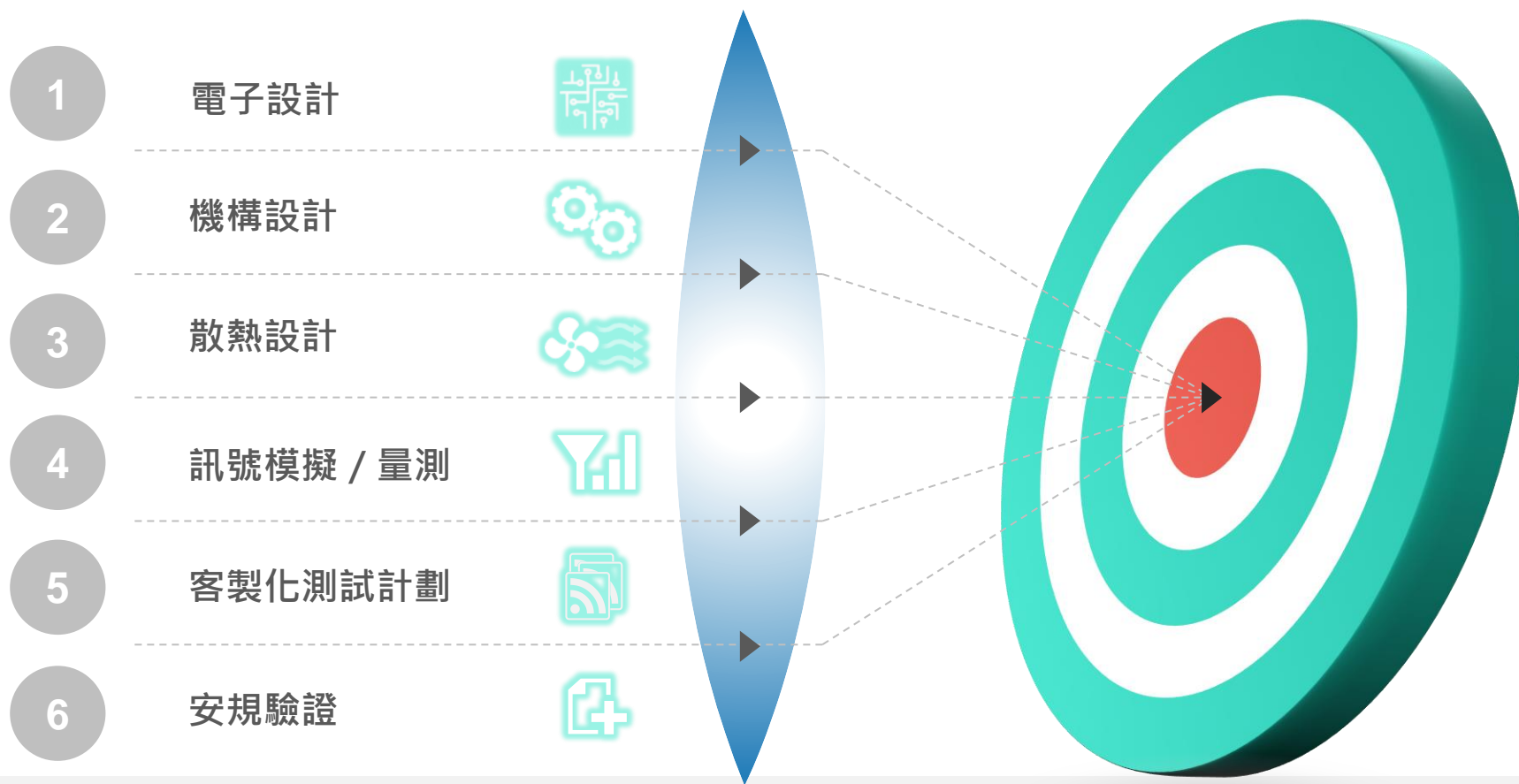


IPC領域 經驗豐富專業研發人員

- 20+年研發經驗 → 50%
- 5~20年研發經驗 → 45%

- ✓ 硬體設計能力
- ✓ 軟體設計能力
- ✓ 可靠性和相容性驗證能力

硬體設計能力





硬體

01

Electrical Validation - Low Speed Signal

- Clock / SMBus / SPI Waveform Test
 - Intel/AMD Power On Sequence Waveform Test
-

02

Electrical Validation - High Speed Signal

- USB / SATA / PCIE / Ethernet Eye Diagram Test
 - SFP+ / SFP28 / HDMI / DP Eye Diagram Test
-

03

Power Verification

- Transient and Ripple Measurement
- Output OC/OV Protection
- Turn On/Off Overshoot
- Power Efficiency Test
- Multi Phase Synchronous Control Test
- Thermal Compensation Test

軟體

01

Mainstream OS

- Windows or Windows Server
 - Linux
-

Reliability

- 3DMark 11 Advanced Edition
 - FurMark
 - PassMark BurnInTest for Windows/Linux
 - MemTest86 Pro
 - MobileMark
 - PCMark Advanced Edition
-

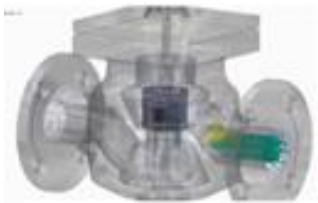
02

Performance

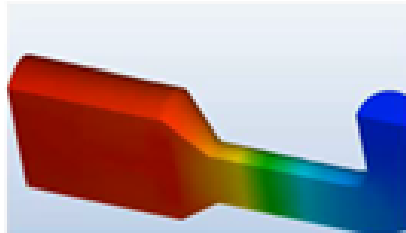
- Xena Network Throughput Test
- PassMark Performance Test
- 3DMark Fire Strike
- 3DMark 11 Advanced Edition
- PCMark

03

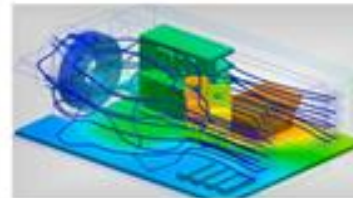
Flow control



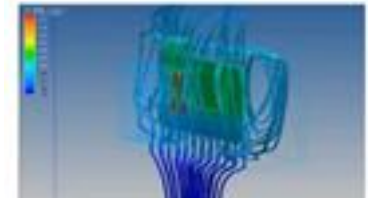
Heat transfer analysis



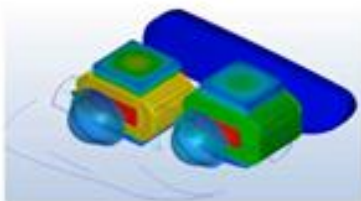
Forced Convection



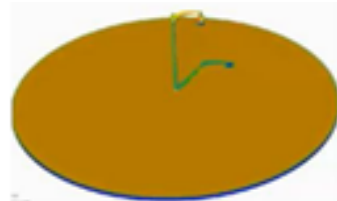
Natural Convection



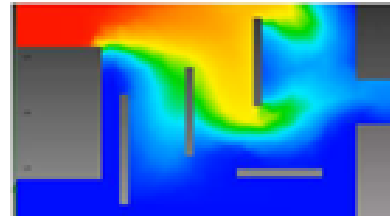
Thermal radiation analysis



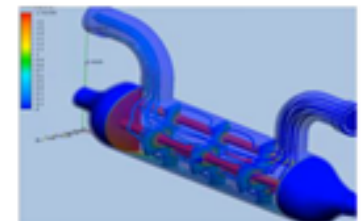
Solar Radiation



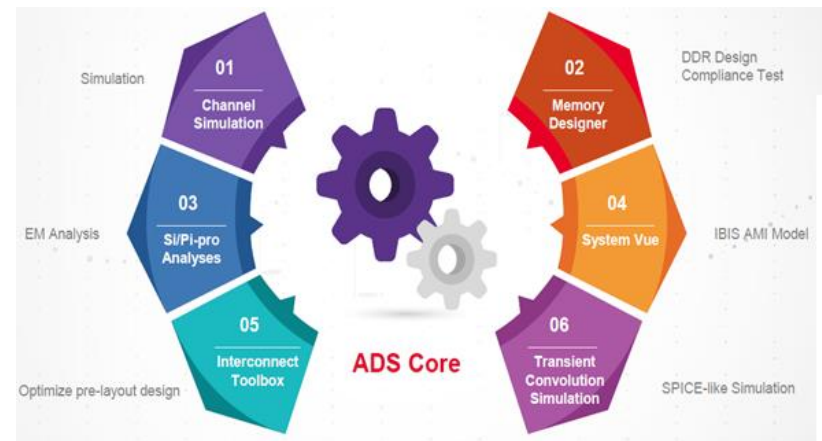
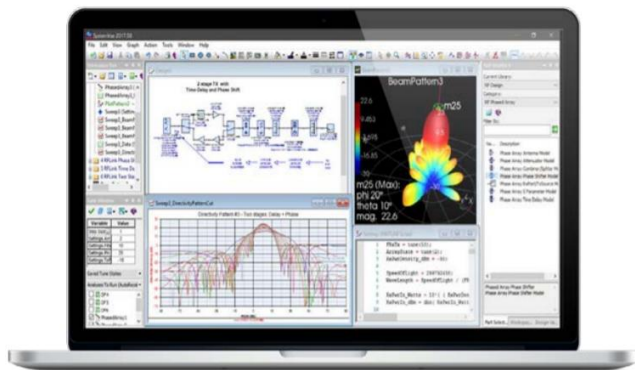
Concentration and Mixing analysis



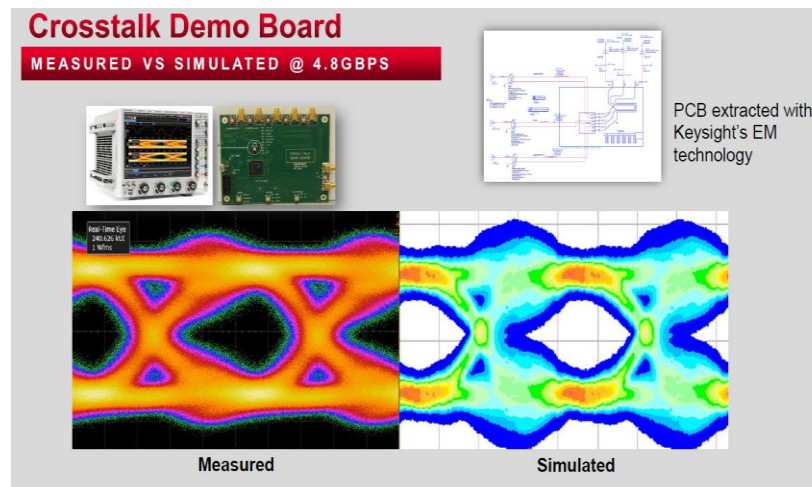
Condensation Analysis



- Keysight ADS 2020



- Crosstalk Simulation





一 重點產品 介紹

主要產品線

嵌入式電腦

Embedded Boards,
Fanless Systems & IoT
Gateway Computers



工業觸控電腦

Stainless Steel, Open
Frame & Fanless Panel
PCs



數位看板播放系統

Entry-level, Mid-range,
Extreme Performance &
Outdoor Players



網路通訊產品

2U/1U Rackmount
& Desktop Appliances



RISC平台

RISC SBCs & ARM-
based IoT Gateway
Computers



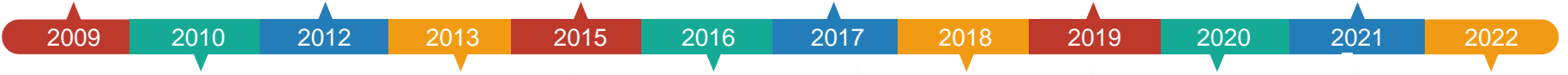
智慧運輸電腦系統

Railway Computers & In-
Vehicle Computers



產品得獎紀錄

 <p>SI-24S</p> 	 <p>SI-38</p>   <p>AFB100</p> 	 <p>SI-60E</p>   <p>SE-92</p>    <p>ARTSI-32TM</p> 	 <p>SI-623-N</p>   <p>UMT-7211</p> 	 <p>MPT-3000RP</p>   <p>DRD-037PC</p>  <p>MAI602-M4D80</p>  <p>SI-324</p>	 <p>VINO2100</p>   <p>SP-63E</p>  <p>AMI230</p>  <p>MPT-1000R</p>  <p>MPT-8000AR</p>  <p>MRD-286</p>
---	---	--	--	---	--



 <p>SI-24S</p>  	 <p>SI-38</p>   <p>BST-1850</p> 	 <p>SI-613</p>   <p>MPT-3000R</p>   <p>SI-304</p>  <p>SI-60E</p>  <p>FWA5104</p>  <p>ASTUT-W153</p> 	 <p>UMT-7211</p> 	 <p>SW-101-N</p> 	 <p>MPT-500R</p>   <p>CMB100M</p>  <p>IKS2700</p>
---	---	---	--	--	---

AIoT智慧物聯網

NVIDIA平台

嵌入式電腦系統



Intel平台

嵌入式電腦系統



Qualcomm平台

SMARC CPU電腦模組





AI 智慧教育平台

採用廣積**AIER1000**智慧教育電腦平台



Intel Core Platform



AMR

自主移動機器人

採用廣積**ASB200**系列嵌入式電腦系統



Intel Core Platform



3D

內視鏡影像系統

採用廣積**ODM**客製化嵌入式電腦系統



Intel Core Platform



高鐵車廂 軌道巡檢系統

採用廣積**FWA8408**網路通訊電腦系統

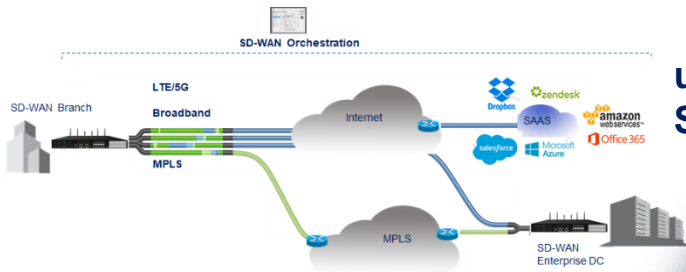


Intel Core Platform



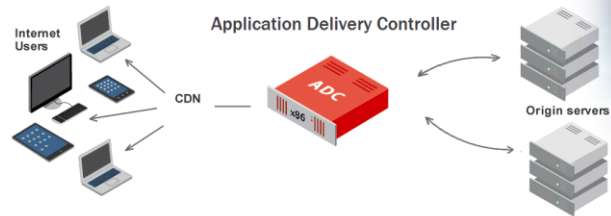
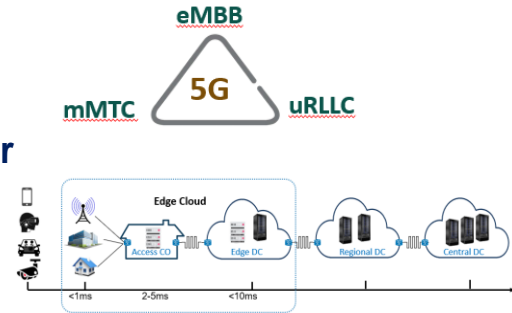
Networking 網路通訊

5G發展趨勢



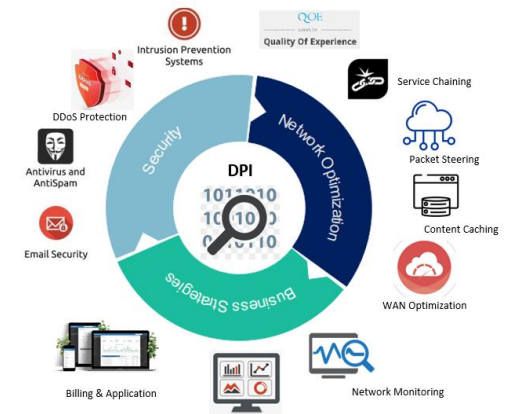
uCPE
SDWAN

MEC
Edge Server



Application
Delivery

Network
Security



邊緣運算產品 – 5G(uCPE/SD-WAN & MEC)

INA1600R

INA1600V



- LTE/5G & Wifi/Wifi 6
- 8 Antennas
- Optionally supporting up to 50°C

INA5606

- LTE/5G & Wifi/Wifi 6 supporting 8 Antennas
- 1x Ethernet Module
- IPMI Remote Control
- Short chassis



Sub Entry

Entry

AMD
R1000
R2000
V1000

Intel
Denverton
C3000

Intel
Ice Lake-D

Intel
Ice Sapphire
Rapids SP
(Dual)

Premium

Performance

INA2600



- LTE/5G & Wifi/Wifi 6
- 6 Antennas

INA7602

- Modular Design
- IPMI Remote Control
- OTII complied
- Up to 8 PCIe expansions
- Short chassis





資料中心 防火牆系統





Automation 自動化控制



SMT 自動化生產設備





AOI 自動檢測系統

採用廣積**AMI221**無風扇電腦系統



Intel Core Platform

Digital Signage 數位看板

數位看板產品功能特色

Hardware EDID Emulation



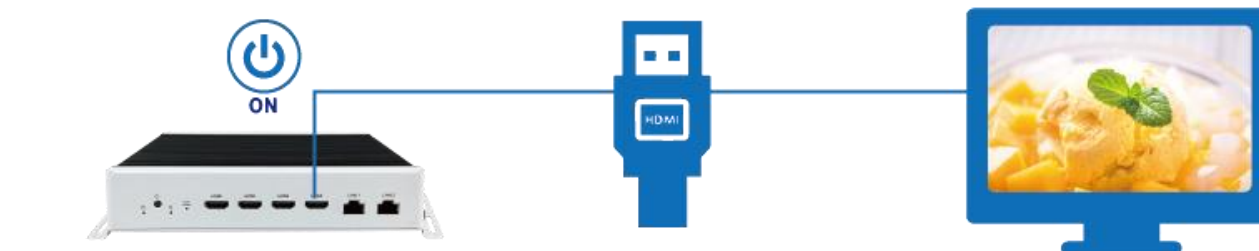
The hardware EDID (extended display identification data) emulation function prevents screen convergence issues due to cable disconnections, and erroneous hardware settings or digital playback software settings.

Display Status Monitoring



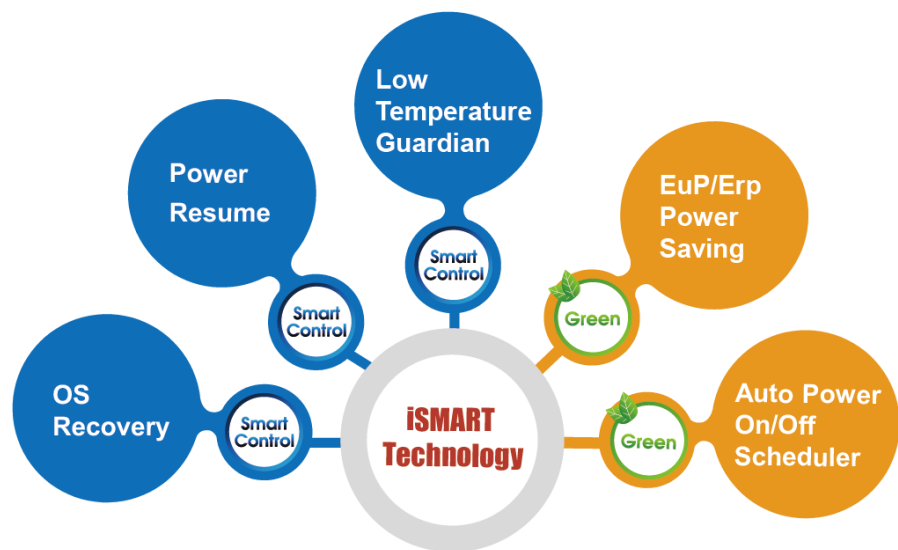
Built-in display monitoring function helps monitor display status from the field sites continuously.

HDMI-CEC Function

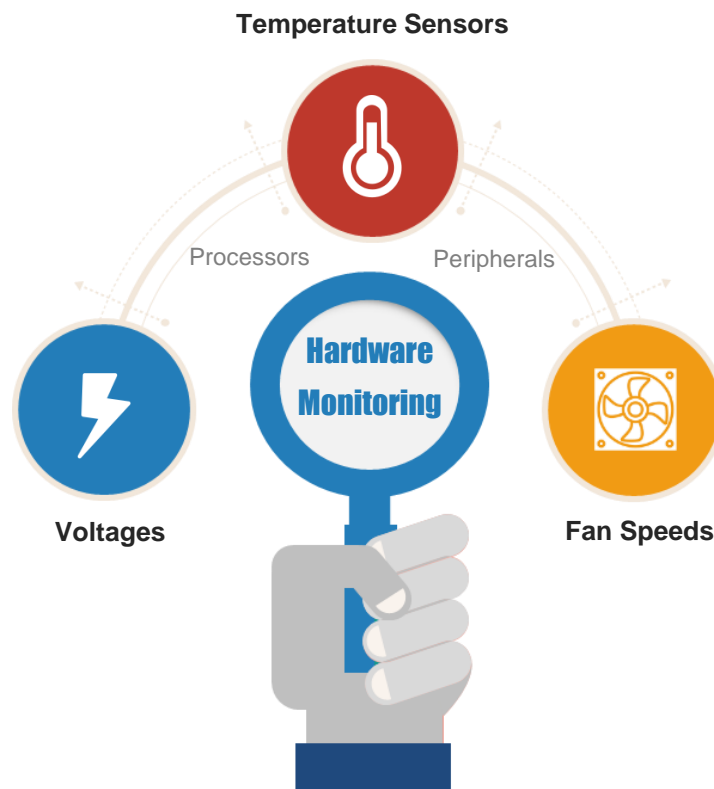


CEC Allows for Display On/Off Remote Control via HDMI.

iSMART Energy-Saving Technology



Observer Hardware Monitoring



Time	Flight	Gate	Destination	Time	Flight	Gate	Destination	Time	Flight	Gate	Destination
10:40	DY1176	F8	Milano/Malpensa	11:00	SU2175		Berlin	11:30	W1117		Frankfurt
10:45	SK6106	A6	Bodo	11:05	SK6112		Bodo	11:35	DY1190		Frankfurt
11:00	SK2129	C7	Bergen	11:05	SK2105		London/Gatwick	11:40	SK2108		Bergen
11:00	W17142	A36	Sandnessjøen	11:05	DY1196		Oslo	11:45	SK2108		Bergen
11:10	SK4123	A10	Stavanger	11:15	A9506		Helsinki	11:45	SK2108		Bergen
11:10	SK837	E13	Park/DG	11:25	SK805		London/Heathrow	11:45	DY1190		Frankfurt
11:10	SK837	F30	New York/JFK	11:30	DY812		Bergen	11:45	DY1190		Frankfurt
11:10	SK813	E6	Amsterdam	11:30	DY794		Trondheim	11:45	DY1190		Frankfurt
11:15	TR2152	F23	Istanbul	11:30	SK2303		Kristiansund	11:45	DY1190		Frankfurt
11:30	SK3183	D61	Aurund	11:30	DY354		Havsto/Harvik	11:45	DY1190		Frankfurt
11:35	AA313	F18	London/Heathrow	11:30	DY346		Bodo	11:45	DY1190		Frankfurt
11:35	W17175	A27	Oslo/Walla	11:30	SK1468		Kabonhavn	11:45	DY1190		Frankfurt
11:40	DY812	D2	Stockholm	11:35	DY1340		Catania	11:45	SK1171		London/Heathrow
11:50	KL1144	D6	Amsterdam	11:40	DY119		Trondheim	11:50	SK4131		Stavanger
12:00	DY1052	D50	Gdansk	11:40	SK4123		Stavanger	11:50	SK7357		Kristiansund
12:00	W17147	A36	Sandnessjøen	11:40	SK4123		Kabonhavn	11:50	DY1190		Frankfurt
12:05	EW1195	D1	Hamburg	11:55	CH316		Wien	11:50	SK6106		Bodo
12:10	W17135	A37	Flora	12:00	SK4123		Hamburg	11:55	DY1190		Frankfurt
12:15	D85121	E9	Alicante	12:00	W1952		Reims	11:55	SK4116		Bodo
12:15	SK4148	A2	Alta	12:00	W1713		Via Brønnøysund	11:55	DY1190		Frankfurt
12:30	DY1040	D3	Kiev	12:00	E2719		Helsinki	11:55	W1922		Stockholm
12:40	AF1175	E6	Paris/CDG	12:05	SK4118		Trondheim	11:55	DY1190		Frankfurt
12:45	SK3109	DA	Frankfurt	12:05	DY916		Bodo	11:55	SK4123		Bodo
12:45	TR711	06	Lisbon	12:10	DLX181		Amsterdam	11:55	SK4123		Bodo
12:50	DY512		Stavanger	12:10	DY1190		Larnaca	12:00	SK6112		Bodo
12:50	SK816		Stockholm	12:15	TQ915		Brønck	12:00	D81226		Dublin
12:55	TR216		St. Petersburg	12:30	Q1118		Riga	12:00	W1149		Dublin
12:55	FR1197		Londra/Heathrow	12:30	Q1118		Dublin	12:00	UH613		Frankfurt
12:55	SK314		Trondheim	12:35	SK1180		Kristiansund	12:00	DY4112		Alta
				12:35	SK1180		Fardo	12:00	DY1080		Prinos/Karlsruhe

機場

航班時刻表

採用廣積SI-60E數位看板播放系統



Intel Core Platform



證券交易所 懸掛式立體看板

採用廣積SI-58數位看板播放系統



Intel Core Platform



機場

廣告電視牆

採用廣積SI-60E數位看板播放系統



Intel Core Platform



自助式 車道點餐系統





Transportation 交通運輸



軌道運輸 地鐵交通系統

採用廣積MPT-3000R軌道交通電腦系統



Intel Core Platform

智慧交通 電池交換站



智慧交通 路停計費系統





Medical智慧醫療



醫療

床邊照護系統

採用廣積**BST-1850**床邊醫療照護系統



AMD Platform

IT

IIoT

OT

NOVAKON

HMI Turnkey Solutions



ERP

PLM

MES

SCADA



iFACE DESIGNER

Professional HMI UI Editor





IoT

能源管理平台

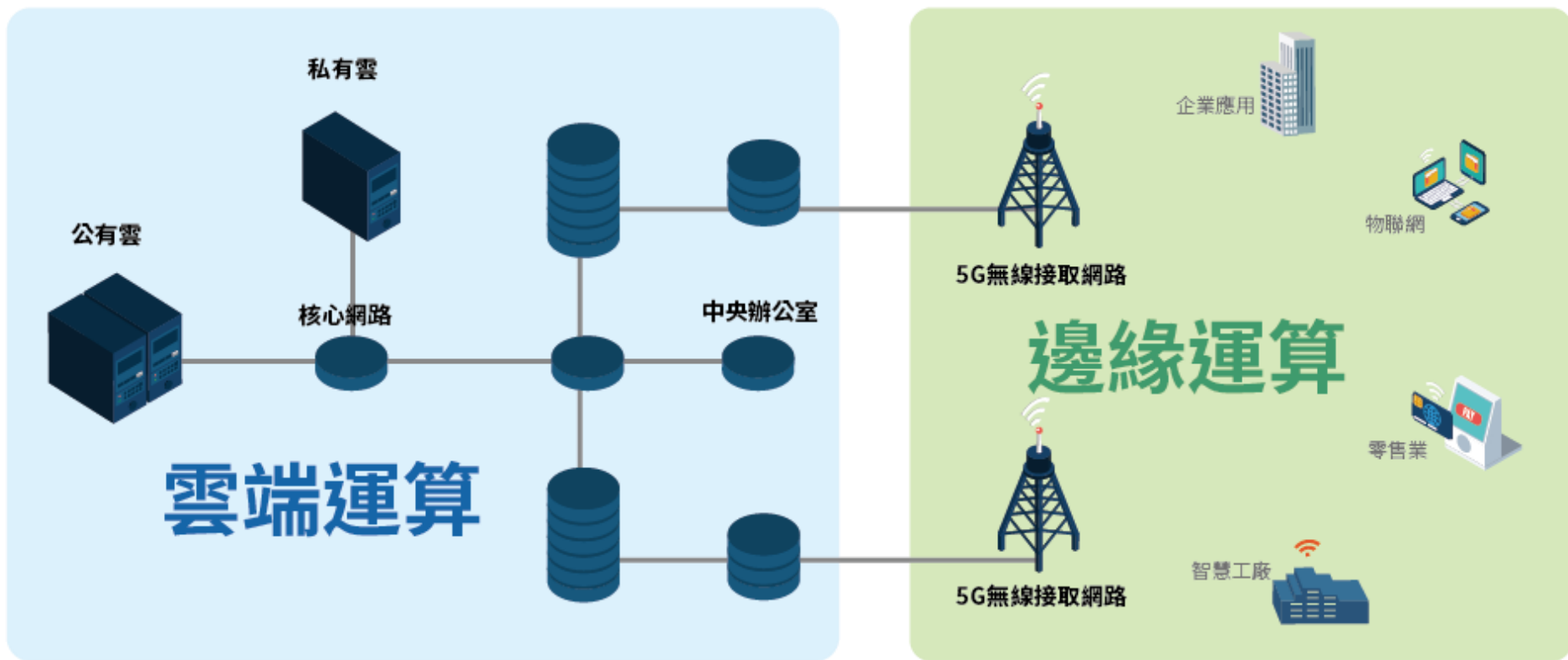
採用廣積**OPF-151-PC-NVK**觸控電腦



Intel Pentium Platform



— 未來機會



AIoT



工業自動化

智慧城市

運輸與物流

零售管理





**Thank
You**